

Spare parts list
(5.963-773.0) Spare parts list KM 120/150 Bat

DE HINWEISE

Weitere Sprachen:

Diese Ersatzteilliste ist in weiteren Sprachen erhältlich. Sie erhalten diese unter www.kaercher.com im Bereich Service.
Die Schreibweise der Teilenummer, z.B. 75456380, entspricht der Teilenummer 7.545-638.0.

Mengenangaben:

Die Mengenangaben in der Ersatzteilliste entsprechen den in der Baugruppe verbauten Stückzahlen der Bauteile.

Meterware:

Ersatzteile welche als Meterware geliefert werden sind auf Einbaulänge selbst zu kürzen. Die Stückzahlen sind als Mindestbestellmenge =1m angegeben und müssen je nach Bedarf auf weitere volle Meterzahlen erhöht werden.

Versionen/ Werknummern:

Sind Versionen oder Werknummern in der Ersatzteilliste angegeben, ist anhand dieser vor Bestellung zu prüfen, welches Bauteil für ihr Gerät verwendet werden muss.

Lackierte Teile:

Bei Bestellungen von lackierten Teilen welche in der Ersatzteilliste nicht in verschiedenen Farben ausgewiesen sind, ist zusätzlich die Farbnummer oder Farbe mit anzugeben.

Technische Änderungen:

Technische Änderungen sowie das Recht der ausschließlichen Auswertung unseres geistigen Eigentums behalten wir uns vor.

EN INSTRUCTIONS

Other languages:

This list of spare parts is also available in other languages. You can get this list from www.kaercher.com in the Service division.
The designation of the part number e.g. 75456380 is equal to 7.545-638.0.

Quantity details:

The quantity details in the spare parts list correspond to the number of pieces of the component installed in the assembly group.

Piece goods:

Spare parts that are sold as piece goods are to be cut to the desired length. The quantities have been indicated as minimum order quantity =1m and must be rounded off to the full meter figure depending on your requirements.

Version/ Plant numbers:

If version or plant numbers are mentioned in the spare parts list, then use the same to check before ordering which spare part needs to be used for your appliance.

Painted parts:

While ordering painted parts that are not mentioned in the spare parts list in their colour variations, please mention the colour number or the colour you require.

Technical changes:

We reserve the right to make technical changes as well as the right to exclusive use of our intellectual property.

FR REMARQUES

Autres langues:

Cette liste de pièces de rechange est disponible en autres langues. Cela est disponible sous www.kaercher.com dans le menu Service.
La désignation du numéro de pièce, par ex. 75456380, correspond au numéro de pièce 7.545-638.0.

Indications de quantité:

Les indications de quantité dans la liste de pièces de rechange correspondre aux nombres de pièces des composant utilisées dans la construction.

Matériel au mètre:

Les pièces de rechange qui sont livrées au mètre doivent être raccourcies à longueur souhaitée par l'acheteur même. Les nombres des pièces sont indiquées en quantité de commande minimale = 1m et doivent être augmentés selon le besoin à une chiffre de mètre complète.

Versions/ Numéros d'usine:

Lorsqu'il sont indiquées des versions ou des numéros d'usine dans la liste de pièces de rechange, vous devez vérifier que composant doit être utilisé pour votre appareil.

Pièces laquées:

Pour commander des pièces laquées, où les différentes couleurs ne sont pas indiquées dans la liste des pièces de rechange, vous devez indiquer en plus le numéro de la couleur ou seulement la couleur.

Modifications techniques:

Nous nous réservons la possibilité des modifications techniques ainsi le droit d'exploitation exclusive de notre propriété intellectuelle.

IT AVVERTENZE

Altre lingue:

Il presente elenco di parti di ricambio è disponibile sul nostro sito Web anche in altre lingue: sotto www.kaercher.com alla voce "Service".

L'indicazione del codice pezzo, ad es. 75456380, corrisponde al codice pezzo 7.545-638.0

Indicazioni di quantità:

Le indicazioni di quantità riportate dall'elenco "parti di ricambio" corrispondono al numero delle singole componenti contenute nella rispettiva unità.

Merce a metro:

Le parti di ricambio fornite come "merce a metro" devono venire in seguito accorciate alla lunghezza necessaria per il montaggio. La quantità unitaria è indicata come "quantità minima di ordinazione = 1m" e deve all'occorrenza venire moltiplicata per il numero intero di metri necessari.

Versioni / Numeri di fabbricazione:

Quando l'elenco "parti di ricambio" riporta diverse versioni o numeri di fabbricazione, confrontare la versione o il numero di fabbricazione del ricambio desiderato con quelle/i presenti nell'elenco e indicarla/o al momento dell'ordinazione.

Parti di ricambio verniciate:

Nel caso di ricambi verniciati, se l'elenco parti di ricambio non ne riporta espressamente i diversi colori, al momento dell'ordinazione è necessario indicare anche il colore o il numero del colore desiderato.

Modifiche tecniche:

Ci riserviamo il diritto di apportare modifiche tecniche così come il diritto di utilizzo esclusivo della nostra proprietà intellettuale.

ES INDICACIONES

Otros idiomas:

La lista de piezas de repuesto se puede adquirir en otros idiomas. La puede adquirir en www.kaercher.com en el área de servicios.

La notación de los números de las piezas, p.ej. 75456380 corresponde al número de pieza 7.545-638.0.

Cantidades:

Las indicaciones de cantidades de la lista de piezas de repuesto corresponden al número de piezas montadas en el componente.

Mercancía por metros:

Las piezas de repuesto que se suministran por metros se pueden cortar al largo deseado. La unidad mínima de pedido es de = 1 m y el número de metros completos se puede aumentar según necesidad.

Versiones/números de fábrica:

Si se indica la versión o número de fábrica en la lista de piezas de repuesto, se debe comprobar en ella la pieza a usar para su aparato antes de realizar el pedido.

Piezas lacadas:

Al realizar pedidos de piezas lacadas que no estén indicadas en los diferentes colores en la lista de piezas de repuesto, se debe indicar también la referencia del color o el color.

Modificaciones técnicas:

Reservados los derechos de realizar modificaciones técnicas y aprovechar nuestra propiedad intelectual.

PL WSKAZÓWKI

Pozostałe języki:

Ta lista części zamiennych jest dostępna w także w innych językach. Mogą ją Państwo pobrać ze strony www.kaercher.com w dziale Serwis.

Sposób zapisywania numeru części, np. 75456380, odpowiada numerowi części 7.545-638.0.

Dane ilości:

Dane ilości podane w liście części zamiennych odpowiadają liczbie sztuk podzespołów tworzących dany moduł.

Towar sprzedawany na metry:

Części zamienne dostarczane jako towar sprzedawany na metry po zamontowaniu należy samodzielnie skrócić do potrzebnej długości. Liczba sztuk podana jest jako minimalna ilość zamówienia = 1m i w zależności od potrzeb zwiększa się ją o kolejne pełne metry.

Wersje/ Numer zakładu:

Jeżeli w liście części zamiennych podane są wersje lub numery zakładu, przed zamówieniem na ich podstawie należy sprawdzić, który podzespół stosuje się w Państwa urządzeniu.

Części lakierowane:

W przypadku zamówień części lakierowanych, które w liście części zamiennych nie podano w wielu kolorach, należy dodatkowo zaznaczyć nr koloru lub kolor.

Zmiany techniczne:

Zastrzegamy sobie prawo do zmian technicznych oraz wyłącznego wykorzystywania naszej własności intelektualnej.

RU УКАЗАНИЯ:

Другие языки:

Данный список запасных частей также доступен на других языках. Вы найдете его на сайте www.kaercher.com в разделе Service
Маркировка номера детали, например, 75456380, соответствует номеру детали 7.545-638.0.

Указание количества:

Количественные данные в списке запасных частей соответствуют числу компонентов, входящих в состав узлов.

Товар, продаваемый на метры:

Запасные части, продающиеся на метры, необходимо обрезать до нужной длины. Число изделий указано в виде минимального объема заказа = 1м и их количество можно округлить до требуемого по мере необходимости.

Варианты исполнения/заводские номера:

Если варианты исполнения или заводские номера указаны в списке запасных частей, то перед заказом необходимо проверить, какая деталь подходит для вашего устройства.

Лакированные детали:

При заказе лакированных деталей, варианты расцветки которых не указаны в списке запасных частей, необходимо дополнительно указать номер цвета или необходимый для вас цвет.

Технические изменения:

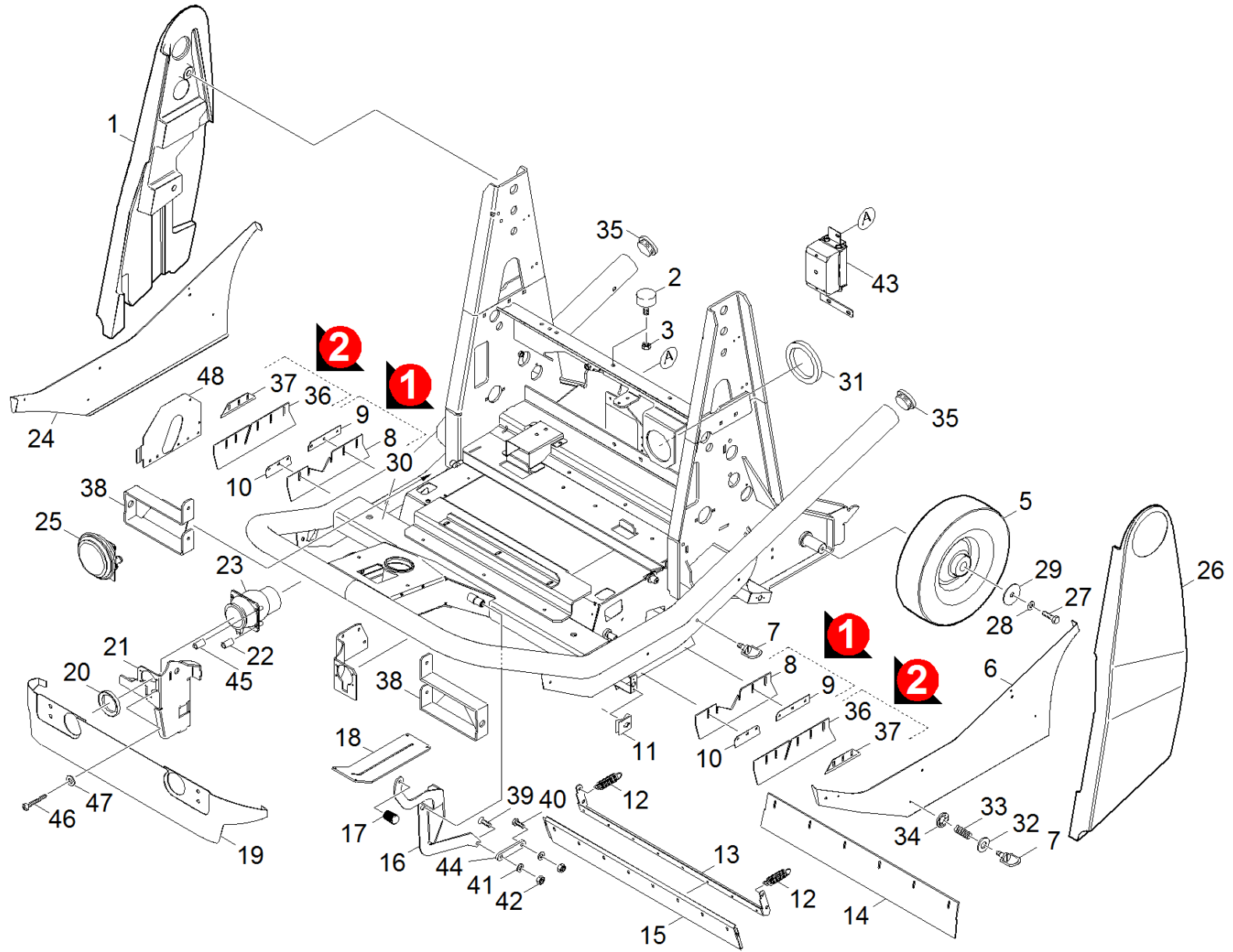
Мы оставляем за собой право на технические изменения, а также право на исключительное использование нашей интеллектуальной собственности.

Table of contents

Spare parts list KM 120/150 Bat (5.963-773.0)	6
10 Frame (0.208-057.0).....	7
20 Steering (0.208-058.0).....	10
30 Pedal (0.208-059.0).....	13
40 Seat (0.209-749.0).....	16
50 Cockpit (0.209-750.0).....	19
60 Sweep tank (0.208-062.0).....	21
61 Reversing rolling mill Version 1 (0.208-063.0).....	22
62 Reversing rolling mill Version 2 (0.209-272.0).....	26
63 Tank refuse (0.208-020.0).....	30
70 Side broom (0.209-753.0).....	33
71 Side broom right (0.209-238.0).....	34
72 Side broom left (0.209-240.0).....	37
80 Blower (0.208-067.0).....	40
90 Filter unit (0.208-068.0).....	43
91 Filter box (0.208-069.0).....	44
92 High emptying (0.208-022.0).....	46
100 Tank hydraulic (0.209-754.0).....	49
110 Hydraulic schematic (0.208-095.0).....	51
120 Electric installation (0.208-096.0).....	53
130 Add-on kit revolving signal light (0.208-139.0).....	55
140 Add-on kit suction hose (0.208-140.0).....	57
150 Add-on kit filter (0.208-141.0).....	59
160 Add-on kit flap (0.208-134.0).....	61

Spare parts list KM 120/150 Bat (5.963-773.0)

Pos	Material #	Name	Qty.	Unit	from ser.nr.	up to ser.nr.
10	0.208-057.0	Frame	1.000	ST	0000000000	0000000000
20	0.208-058.0	Steering	1.000	ST	0000000000	0000000000
30	0.208-059.0	Pedal	1.000	ST	0000000000	0000000000
40	0.209-749.0	Seat	1.000	ST	0000000000	0000000000
50	0.209-750.0	Cockpit	1.000	ST	0000000000	0000000000
60	0.208-062.0	Sweep tank	1.000	ST	0000000000	0000000000
70	0.209-753.0	Side broom	1.000	ST	0000000000	0000000000
80	0.208-067.0	Blower	1.000	ST	0000000000	0000000000
90	0.208-068.0	Filter unit	1.000	ST	0000000000	0000000000
100	0.209-754.0	Tank hydraulic	1.000	ST	0000000000	0000000000
110	0.208-095.0	Hydraulic schematic	1.000	ST	0000000000	0000000000
120	0.208-096.0	Electric installation	1.000	ST	0000000000	0000000000
130	0.208-139.0	Add-on kit revolving signal light	1.000	ST	0000000000	0000000000
140	0.208-140.0	Add-on kit suction hose	1.000	ST	0000000000	0000000000
150	0.208-141.0	Add-on kit filter	1.000	ST	0000000000	0000000000
160	0.208-134.0	Add-on kit flap	1.000	ST	0000000000	0000000000

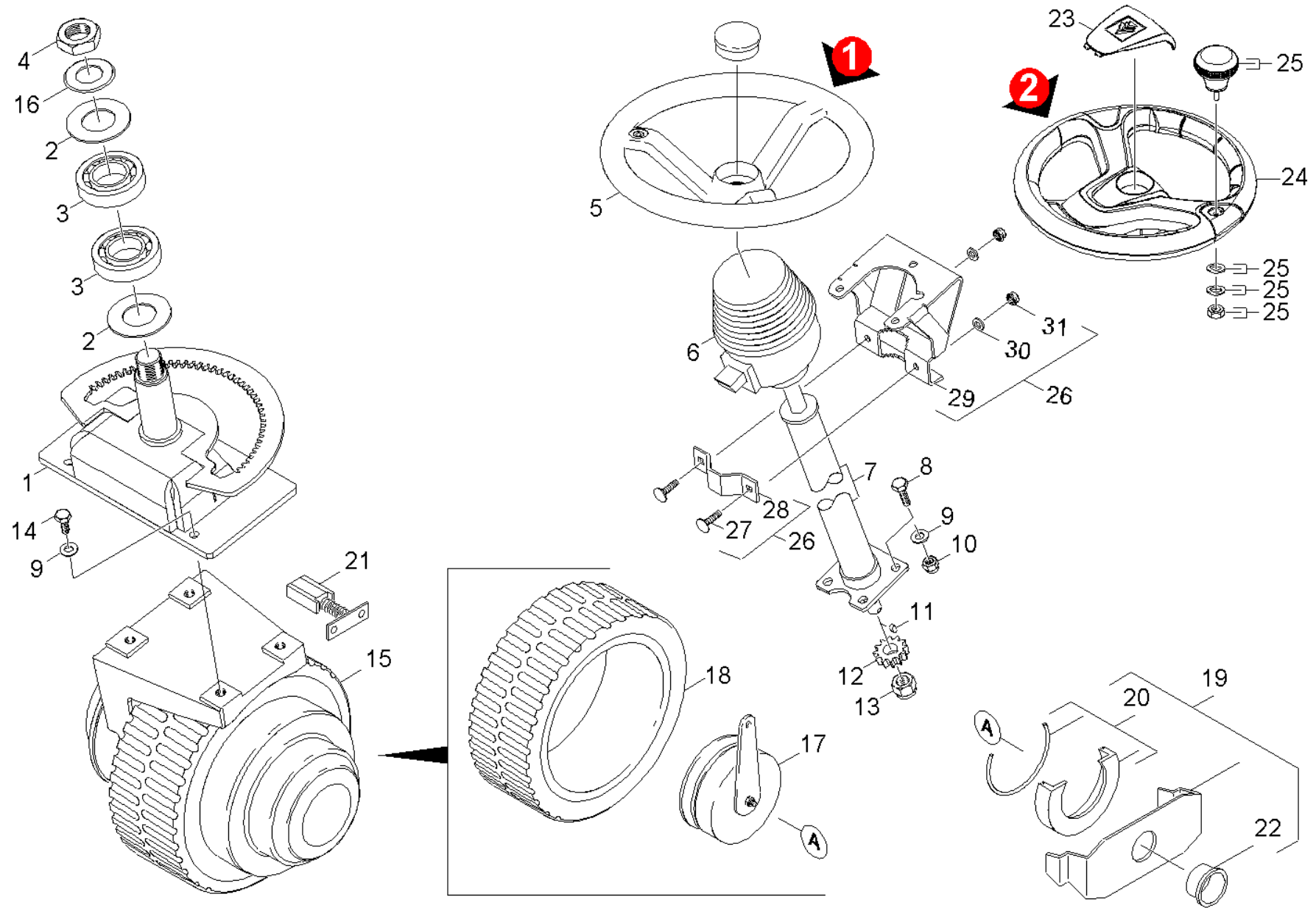


10 Frame (0.208-057.0)

ET/VT (spare/wear parts)	Pos	Material #	Name	Qty.	Unit	from ser.nr.	up to ser.nr.	var. information
	1	5.032-583.0	Covering right	1.000	ST	0000000000	0000000000	
	2	6.339-094.0	Rubber buffer	3.000	ST	0000000000	0000000000	
X	3	7.311-004.0	Hexagon nut M8 -8-A3E ISO 4032	2.000	ST	0000000000	0000000000	
X	4	6.373-700.0	Eye screw LAM8x80-4.6-A3E DIN 444	1.000	ST	0000000000	0000000000	
	5	6.435-849.0	Wheel solid rubber	1.000	ST	0000000000	0000000000	
	6	5.057-129.0	Sheet metal component frame	1.000	ST			
X-X	7	6.375-351.0	Closure	10.000	ST	0000000000	0000000000	
X-X	8	5.365-250.0	Rubber lip side	2.000	ST	0000000000	0000000000	Version 1
X-X	9	5.190-215.0	Strip side rear	2.000	ST	0000000000	0000000000	Version 1
X-X	10	5.190-216.0	Strip side	2.000	ST	0000000000	0000000000	
X-X	11	6.375-242.0	Closure	8.000	ST	0000000000	0000000000	
X-X	12	6.330-421.0	Extension spring	2.000	ST	0000000000	0000000000	
	13	5.058-799.0	Sheet metal component	1.000	ST	0000000000	0000000000	
X-X	14	5.365-255.0	Rubber lip rear	1.000	ST	0000000000	0000000000	
X-X	15	5.365-256.0	Rubber lip	1.000	ST	0000000000	0000000000	
	16	4.040-841.0	Pedal bulk waste flap complete	1.000	ST	0000000000	0000000000	
	17	5.321-701.0	Handhold	1.000	ST	0000000000	0000000000	
	18	5.006-814.0	Plate	1.000	ST	0000000000	0000000000	
	19	4.040-483.0	Sheet metal component covering front	1.000	ST	0000000000	0000000000	
	20	5.114-537.0	Ring headlight	2.000	ST	0000000000	0000000000	
	21	4.040-354.0	Broom suspension right	1.000	ST	0000000000	0000000000	
	22	5.116-122.0	Sleeve headlight bottom	4.000	ST	0000000000	0000000000	
	23	6.651-582.0	Headlight	2.000	ST	0000000000	0000000000	
	24	5.057-128.0	Sheet metal component frame	1.000	ST			
	25	6.635-326.0	Signal horn	1.000	ST	0000000000	0000000000	

10 Frame (0.208-057.0)

ET/VT (spare/wear parts)	Pos	Material #	Name	Qty.	Unit	from ser.nr.	up to ser.nr.	var. information
	26	4.040-754.0	Side part complete	1.000	ST			VERSION 2
	26	5.032-584.0	Covering left	1.000	ST	0000000000	0000000000	VERSION 1
X-X	27	7.304-801.0	Hexagonal head screw M10x25-A4-70 ISO 4	2.000	ST	0000000000	0000000000	
	28	5.116-060.0	Washer	2.000	ST	0000000000	0000000000	
X-X	29	7.312-066.0	Washer 10 -A2 ISO 7090	2.000	ST	0000000000	0000000000	
	30	5.057-674.0	Sheet metal component covering cap motor	1.000	ST	0000000000	0000000000	
X-X	31	6.363-288.0	Seal	1.000	ST	0000000000	0000000000	
X-X	32	6.312-068.0	Washer	10.000	ST	0000000000	0000000000	
X-X	33	6.330-102.0	Pressure spring	10.000	ST	0000000000	0000000000	
X-X	34	6.313-016.0	Locking ring	10.000	ST	0000000000	0000000000	
X	35	6.368-395.0	Protecting cap round 70mm	2.000	ST			
X-X	36	5.365-293.0	Rubber lip side	2.000	ST			Version 2
	37	5.190-287.0	Strip side rear	2.000	ST			Version 2
	38	5.058-782.0	Sheet metal component holder	2.000	ST			
X	39	7.305-063.0	Countersunk screw M6x20 -4.8-A2E ISO 20	1.000	ST			
X-X	40	7.304-509.0	Hexagonal head screw M 6x25-A4-70 ISO 4	7.000	ST			
X-X	41	7.312-003.0	Washer 6 -200HV-A3E ISO 7090	27.000	ST			
X-X	42	7.311-425.0	Hexagon nut M6 -04-A2E ISO 10511	34.000	ST			
	43	3.530-651.0	Assembly kit PLC control system	1.000	ST			
	44	5.008-132.0	PLATE GSK	1.000	ST			
	45	5.116-197.0	Sleeve headlight above	4.000	ST			
	46	6.303-330.0	Flake board screw 3x35	8.000	ST			
	47	7.312-043.0	Washer 3-A2 ISO 7089	8.000	ST			
	48	5.061-682.0	Side plate sweep roller chest	1.000	ST			
	100	7.777-999.0	Stockpiling discontinued	1.000	ST			

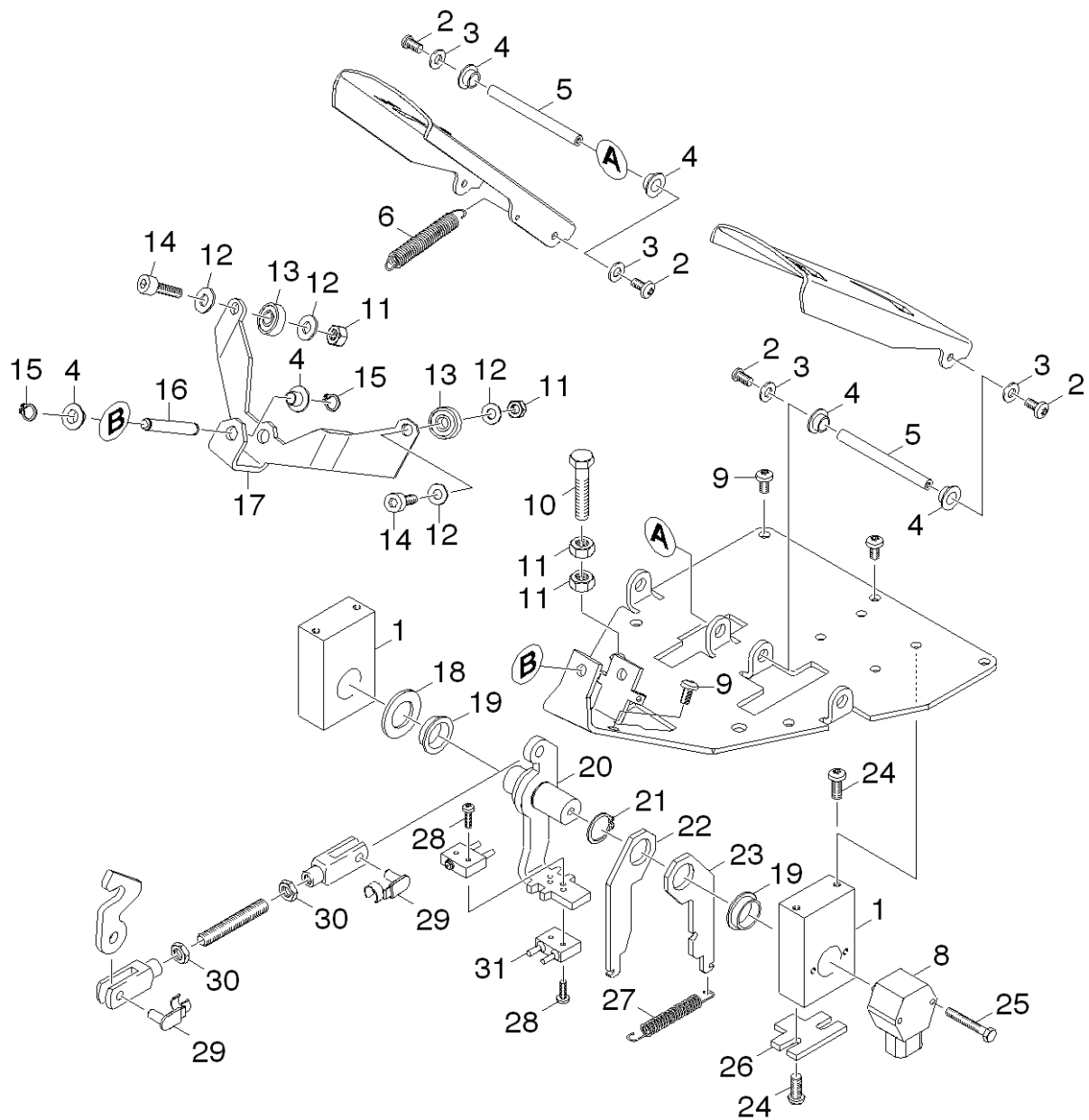


20 Steering (0.208-058.0)

ET/VT (spare/wear parts)	Pos	Material #	Name	Qty.	Unit	from ser.nr.	up to ser.nr.	var. information
	1	4.040-387.0	Holder wheel motor	1.000	ST	0000000000	0000000000	
	2	6.401-282.0	Slip ring 40	2.000	ST	0000000000	0000000000	
	3	7.401-092.0	Ball bearing 7208 B-WAELZLAGST DIN 628	2.000	ST	0000000000	0000000000	
	4	7.311-053.0	Hexagon nut M30x2 -A4-70 ISO 8675	1.000	ST	0000000000	0000000000	
	5	6.435-700.0	Steering wheel	1.000	ST	0000000000	0000000000	VERSION 1
	6	6.435-701.0	Adjustment steering wheel	1.000	ST	0000000000	0000000000	
	7	6.439-192.0	Steering pillar	1.000	ST	0000000000	0000000000	
X	8	7.304-417.0	Hexagonal head screw M10x30-8.8-A3E ISO	4.000	ST	0000000000	0000000000	
X-X	9	7.312-005.0	Washer 10-200HV-A3E ISO 7090	8.000	ST	0000000000	0000000000	
X-X	10	7.311-511.0	Hexagon nut M10-8-A2E ISO 7040	4.000	ST	0000000000	0000000000	
X-X	11	7.318-090.0	Parallel key A5x5x10-C45R DIN 6885	1.000	ST	0000000000	0000000000	
	12	5.352-090.0	Gear wheel	1.000	ST	0000000000	0000000000	
X	13	7.311-059.0	Hexagon nut M16x1,5 -8-A2E ISO10512	1.000	ST	0000000000	0000000000	
X-X	14	7.304-414.0	Hexagonal head screw M10x20-8.8-A3E ISO	4.000	ST	0000000000	0000000000	
	15	6.613-091.0	Wheel drive motor	1.000	ST	0000000000	0000000000	
	16	6.312-121.0	Washer Nilos	2.000	ST	0000000000	0000000000	
X	17	2.641-988.0	Conversion kit retrofit kit brake 12V	1.000	ST			12 Volt Version 2
	17	6.467-045.0	Brake wheel drive motor 10Nm	1.000	ST	0000000000	0000000000	24 Volt Version 1
	18	6.613-106.0	Tire wheel drive motor only for replacem	1.000	ST	0000000000	0000000000	
	19	4.040-728.0	Set seal brake KM 120/150 Bat	1.000	ST			Version 1
	19	4.040-766.0	Set dust protection brake 12V DC	1.000	ST			Version 2
	20	4.040-764.0	Guard ring complete 12V	1.000	ST			Version 2
	20	4.040-607.0	Guard ring complete	1.000	ST			Version 1
	21	6.610-284.0	Carbon brush set replacement KM120/150	1.000	ST			
	22	5.050-530.0	Screw plug	1.000	ST			

20 Steering (0.208-058.0)

ET/VT (spare/wear parts)	Pos	Material #	Name	Qty.	Unit	from ser.nr.	up to ser.nr.	var. information
X-X	23	6.640-353.0	Cap steering wheel KÄRCHER	1.000	ST			VERSION 2
	24	6.435-796.0	Steering wheel	1.000	ST			VERSION 2
X-X	25	6.640-354.0	Handle	1.000	ST			
	26	2.642-472.0	Conversion kit holder steering	1.000	ST			
X-X	27	7.303-183.0	Saucer-head screw M6x25-St-AOP DIN 603	2.000	ST			
	28	5.062-308.0	Sheet metal component steering fixing	1.000	ST			
	29	5.062-307.0	Sheet metal component steering	1.000	ST			
	30	7.312-045.0	Washer 6-200HV-P4E ISO 7089	2.000	ST			
X-X	31	7.311-425.0	Hexagon nut M6 -04-A2E ISO 10511	2.000	ST			
	100	2.641-759.0	Conversion kit brake KM 120/150 BAT	1.000	ST			
X	110	2.641-988.0	Conversion kit retrofit kit brake 12V	1.000	ST			

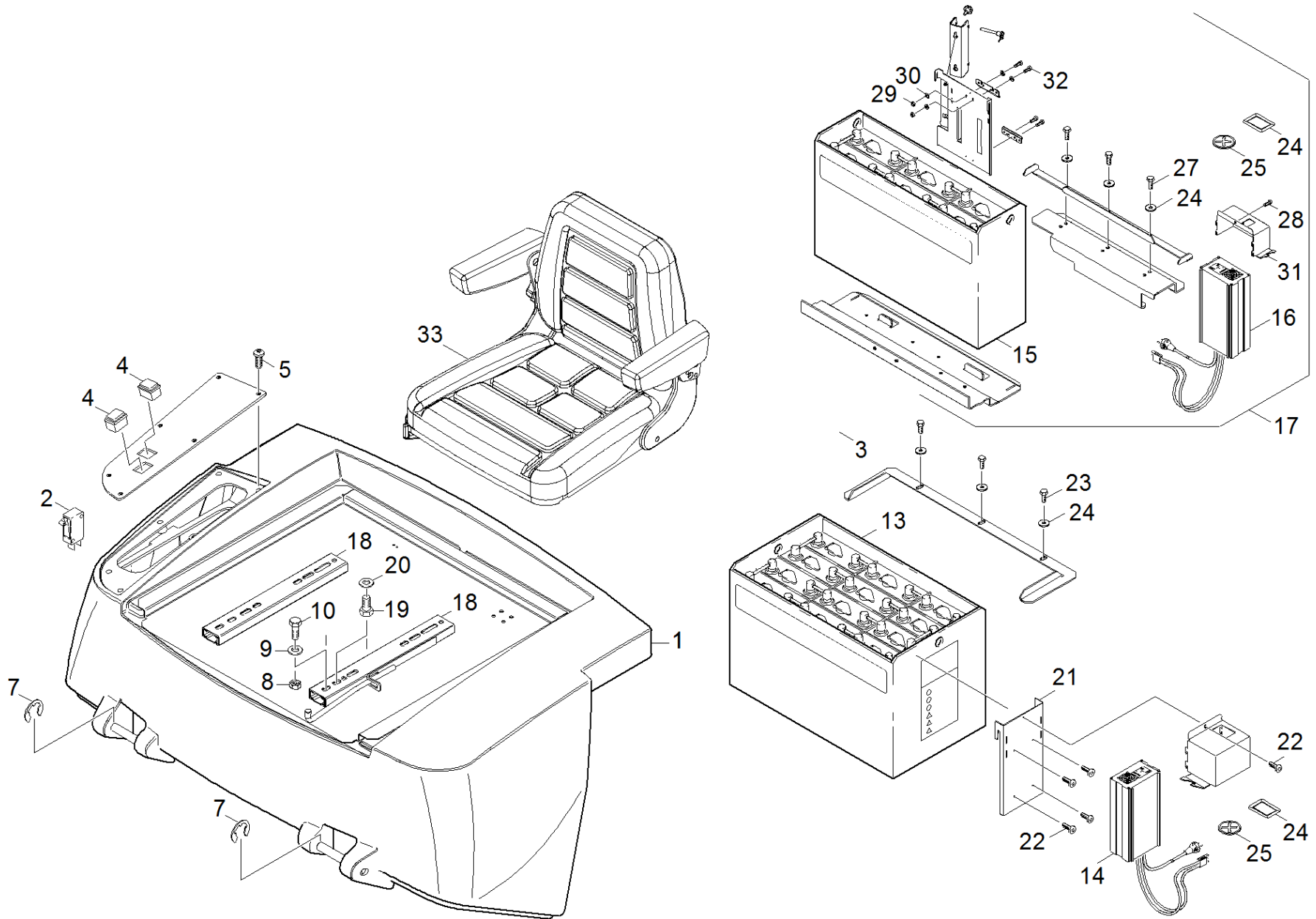


30 Pedal (0.208-059.0)

ET/VT (spare/wear parts)	Pos	Material #	Name	Qty.	Unit	from ser.nr.	up to ser.nr.
	1	5.250-140.0	Bearing pedal BAT	2.000	ST	0000000000	0000000000
X-X	2	7.306-181.0	Screw M 5x 12-A2-70 (In6Rd)	4.000	ST	0000000000	0000000000
X	3	7.312-002.0	Washer 5-200HV-A3E ISO 7090	4.000	ST	0000000000	0000000000
	4	6.437-485.0	Bearing bush	6.000	ST	0000000000	0000000000
	5	5.316-879.0	Bolt	2.000	ST	0000000000	0000000000
X	6	6.330-423.0	Extension spring	2.000	ST	0000000000	0000000000
X-X	7	7.462-023.0	Angle joint CS13 -A2E DIN 71802	1.000	ST	0000000000	0000000000
X	8	6.600-264.0	Angle sensor	1.000	ST	0000000000	0000000000
X-X	9	7.306-089.0	Screw M6x12 -8.8-R2R (In6Rd)	7.000	ST	0000000000	0000000000
X-X	10	7.304-407.0	Hexagonal head screw M 8x45-8.8-A2E ISO	2.000	ST	0000000000	0000000000
X	11	7.311-004.0	Hexagon nut M8 -8-A3E ISO 4032	6.000	ST	0000000000	0000000000
X-X	12	7.312-004.0	Washer 8 -200HV-A3E ISO 7090	4.000	ST	0000000000	0000000000
	13	7.401-149.0	Ball bearing 608-2RS -Wälzl.St DIN 625	2.000	ST	0000000000	0000000000
	14	7.306-042.0	Cylinder head screw M8x25 -8.8-A2E ISO4	2.000	ST	0000000000	0000000000
	15	7.343-014.0	Locking ring 8x0,8-FST-PHR DIN 471	2.000	ST	0000000000	0000000000
	16	5.316-872.0	Bolt	1.000	ST	0000000000	0000000000
X	17	5.050-987.0	Sheet metal component	1.000	ST	0000000000	0000000000
	18	5.115-446.0	Washer	1.000	ST	0000000000	0000000000
X-X	19	6.403-031.0	Plain bearing 20/28	2.000	ST	0000000000	0000000000
	20	4.481-217.0	Lever complete pedal BAT	1.000	ST	0000000000	0000000000
X-X	21	7.343-007.0	Locking ring 20x1,2-FST-RF DIN 471	1.000	ST	0000000000	0000000000
	22	5.059-723.0	Sheet metal component pedal EI.	1.000	ST	0000000000	0000000000
	23	5.058-770.0	Sheet metal component	1.000	ST	0000000000	0000000000
	24	7.306-090.0	Screw M6x16 -8.8-R3R (In6Rd)	6.000	ST	0000000000	0000000000
	25	7.304-043.0	Hexagonal head screw M 4x35-A4-70 ISO 4	2.000	ST	0000000000	0000000000

30 Pedal (0.208-059.0)

ET/VT (spare/wear parts)	Pos	Material #	Name	Qty.	Unit	from ser.nr.	up to ser.nr.
	26	5.059-724.0	Sheet metal component throttle pedal ele	1.000	ST	0000000000	0000000000
X-X	27	6.330-420.0	Extension spring	1.000	ST	0000000000	0000000000
X-X	28	7.306-050.0	Screw M2,5x10 -8.8-R2R (In6Rd)	4.000	ST	0000000000	0000000000
X-X	29	6.316-089.0	Bolt	2.000	ST	0000000000	0000000000
X-X	30	7.311-224.0	Hexagon nut M 8-04-A2E ISO 4035	2.000	ST	0000000000	0000000000
X-X	31	6.630-316.0	Micro switch	1.000	ST		

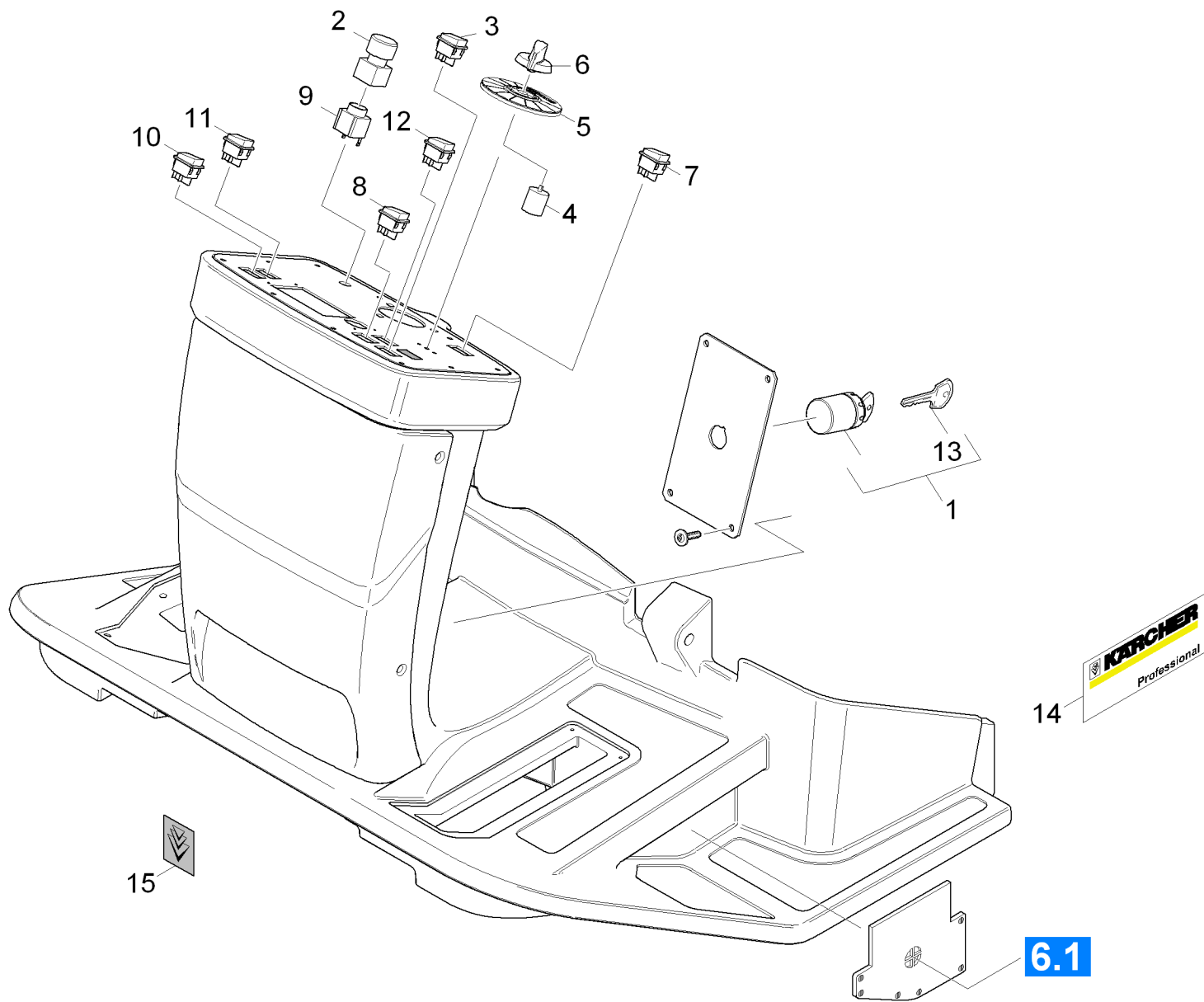


40 Seat (0.209-749.0)

ET/VT (spare/wear parts)	Pos	Material #	Name	Qty.	Unit	from ser.nr.	up to ser.nr.	var. information
	1	5.033-647.0	Cover battery	1.000	ST	0000000000	0000000000	
	2	6.631-788.0	Toggle switch	1.000	ST			
X-X	4	6.632-372.0	Pushbutton six-pole	2.000	ST	0000000000	0000000000	
X-X	5	7.303-046.0	Screw M6x12 -St-R3R (In6Rd)	6.000	ST	0000000000	0000000000	
	7	7.343-306.0	Lock washer 12-St-A2E DIN 6799	2.000	ST	0000000000	0000000000	
X-X	8	7.311-427.0	Hexagon nut M8 -04-A2E ISO 10511	4.000	ST	0000000000	0000000000	
	9	7.312-261.0	Washer 8 -100HV-A3E ISO 7094	8.000	ST	0000000000	0000000000	
X-X	10	7.304-397.0	Hexagonal head screw M8x20-8.8-A2E ISO	4.000	ST	0000000000	0000000000	
	11	6.431-239.0	Bowden wire transmission	1.000	ST	0000000000	0000000000	
	12	6.431-240.0	Bowden wire brake	1.000	ST	0000000000	0000000000	
	13	6.654-112.0	Battery 24V 240Ah	1.000	ST	0000000000	0000000000	
X	14	6.654-143.0	Battery charger low-maintenance 24V/30A	1.000	ST	0000000000	0000000000	
	15	6.654-156.0	Battery kit 400Ah	1.000	ST	0000000000	0000000000	
	16	6.654-188.0	Battery charger 400 Ah	1.000	ST	0000000000	0000000000	
	17	2.640-996.0	Add-on kit battery 400Ah	1.000	ST	0000000000	0000000000	
	18	6.373-869.0	Rail left / right seat	2.000	ST			
	19	7.304-395.0	Hexagonal head screw M8x16-8.8-A2E ISO	4.000	ST			
X-X	20	7.312-004.0	Washer 8 -200HV-A3E ISO 7090	4.000	ST			
	21	5.062-098.0	Covering cap battery charger splash guar	1.000	ST			
	22	7.303-031.0	Screw M4x10 -St-P2R (In6Rd)	5.000	ST			
X-X	23	7.304-399.0	Hexagonal head screw M 8x25-8.8-A2E ISO	3.000	ST			
	24	7.312-261.0	Washer 8 -100HV-A3E ISO 7094	3.000	ST			
	25	5.423-382.0	Protective foil label transparent	1.000	ST			
	26	5.380-889.0	Warning sign BR-BD 750	1.000	ST			
X-X	27	7.304-516.0	Hexagonal head screw M8x20-A4-70 ISO 40	3.000	ST			

40 Seat (0.209-749.0)

ET/VT (spare/wear parts)	Pos	Material #	Name	Qty.	Unit	from ser.nr.	up to ser.nr.	var. information
	28	7.303-031.0	Screw M4x10 -St-P2R (In6Rd)	1.000	ST			
	29	7.311-028.0	Hexagon nut M 4-04-A2E ISO 4035	2.000	ST			
	30	7.312-001.0	Washer 4 -200HV-A3E ISO 7089	6.000	ST			
	31	5.062-099.0	Covering cap battery charger splash guar	1.000	ST			
X-X	32	7.306-206.0	Screw M4x10 -A2-70 (In6Rd)	4.000	ST			
	33	6.373-988.0	Seat	1.000	ST			Version 2



50 Cockpit (0.209-750.0)

ET/VT (spare/wear parts)	Pos	Material #	Name	Qty.	Unit	from ser.nr.	up to ser.nr.
X-X	1	6.375-243.0	Ignition lock	1.000	ST	0000000000	0000000000
X-X	2	6.600-113.0	Pushbutton emergency stop	1.000	ST	0000000000	0000000000
X-X	3	6.632-478.0	Pushbutton filter cleaning	1.000	ST	0000000000	0000000000
X-X	4	2.630-001.0	Switch program selection	1.000	ST	0000000000	0000000000
	5	5.032-738.0	Moulded part symbol washer KM100/100R	1.000	ST	0000000000	0000000000
X-X	6	5.321-738.0	Handhold operational concept	1.000	ST	0000000000	0000000000
X	7	6.632-480.0	Pushbutton four-pole	1.000	ST	0000000000	0000000000
	8	6.632-477.0	Pushbutton four-pole Power	1.000	ST	0000000000	0000000000
X-X	9	6.600-114.0	Switch	1.000	ST	0000000000	0000000000
X-X	10	6.632-484.0	Switch two-pole work illumination	1.000	ST	0000000000	0000000000
X	11	6.632-475.0	Pushbutton two-pole hooter	1.000	ST	0000000000	0000000000
	12	6.632-403.0	Switch six-pole	1.000	ST	0000000000	0000000000
X-X	13	6.815-172.0	Key	1.000	ST	0000000000	0000000000
	14	5.392-874.0	Label side Professional 355 x 133	1.000	ST		
X-X	15	5.392-907.0	Label signet gel 102 x 113	1.000	ST		

60 Sweep tank (0.208-062.0)

Pos	Material #	Name	Qty.	Unit	from ser.nr.	up to ser.nr.	var. information
61	0.208-063.0	Reversing rolling mill Version 1	1.000	ST	0000000000	0000000000	Version 1
62	0.209-272.0	Reversing rolling mill Version 2	1.000	ST			Version 2
63	0.208-020.0	Tank refuse	1.000	ST	0000000000	0000000000	

61 Reversing rolling mill Version 1 (0.208-063.0)

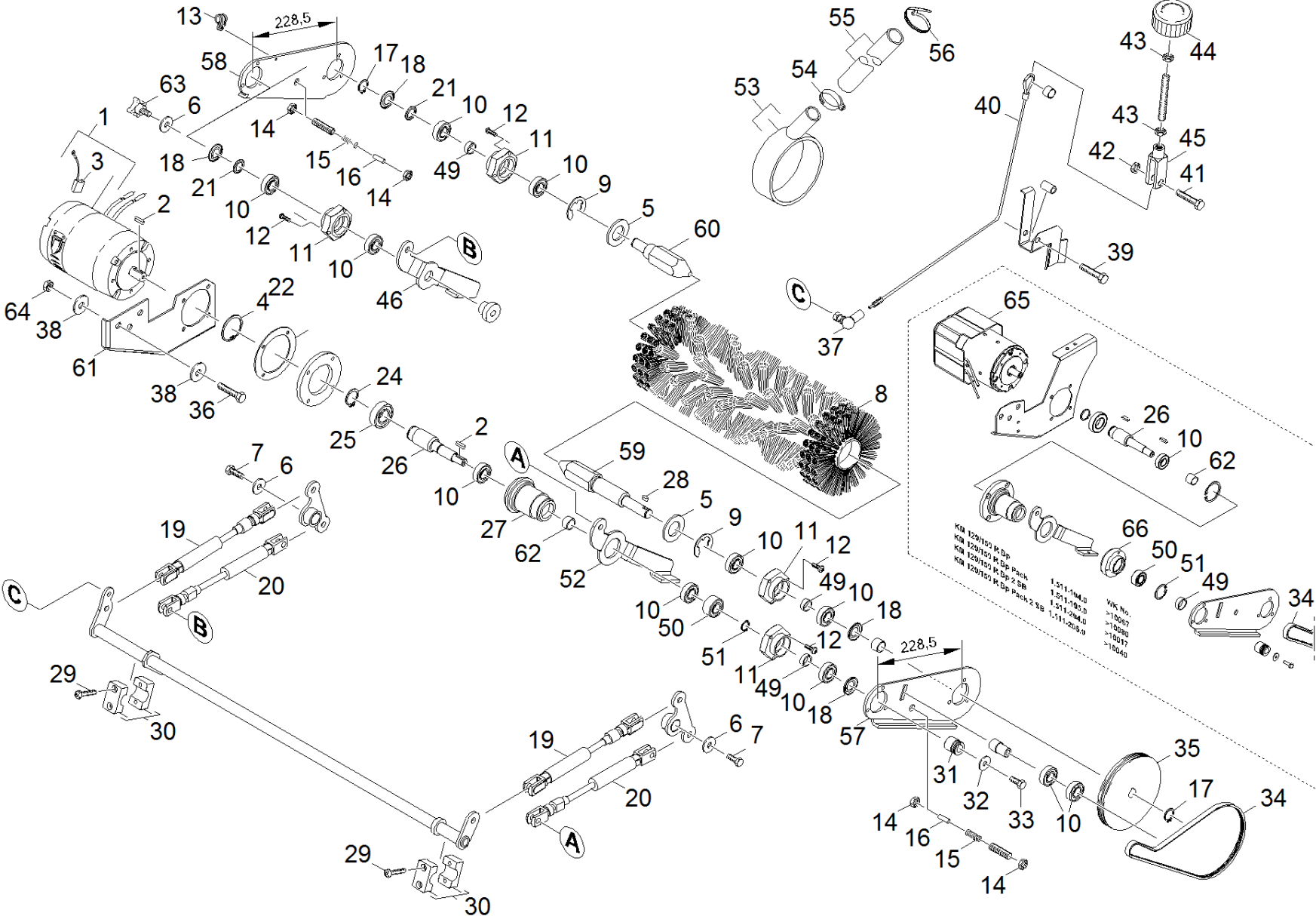
ET/VT (spare/wear parts)	Pos	Material #	Name	Qty.	Unit	from ser.nr.	up to ser.nr.	var. information
X	1	6.613-319.0	Direct current motor 24VDC	1.000	ST			1.511-104 ab WK10038,1.511-204 ab WK10019
X-X	1	6.613-286.0	Direct current motor	1.000	ST	0000000000	0000000000	1.511-104 bis WK10037,1.511-204 bis WK10018
X	2	7.318-070.0	Parallel key 5x5x20-C45R DIN 6885-1	1.000	ST	0000000000	0000000000	
X-X	3	6.610-239.0	Carbon brush set ATAS	1.000	ST	0000000000	0000000000	
X-X	4	7.343-115.0	Locking ring 47x1,75 -St-ph DIN 472	1.000	ST	0000000000	0000000000	
X-X	5	7.312-025.0	Washer 27-200HV-A3E ISO7090	2.000	ST	0000000000	0000000000	
X-X	6	7.312-289.0	Washer 8 -A2 ISO 7093-1	3.000	ST	0000000000	0000000000	
	7	7.304-395.0	Hexagonal head screw M8x16-8.8-A2E ISO	3.000	ST	0000000000	0000000000	
X-X	8	6.906-624.0	Reversing rolling mill KM 120/150	1.000	ST	0000000000	0000000000	
	8	6.906-722.0	Reversing rolling mill soft	1.000	ST	0000000000	0000000000	
X	8	6.906-723.0	Reversing rolling mill hard	1.000	ST	0000000000	0000000000	
X-X	9	7.343-045.0	Lock washer 24-FST-A2E DIN 6799	2.000	ST	0000000000	0000000000	
X-X	10	7.401-105.0	Ball bearing 6003-2RS Wälzl.St DIN 625	11.000	ST	0000000000	0000000000	
X-X	11	5.122-449.0	Flange 6kt55 (Stahl)	4.000	ST	0000000000	0000000000	
	12	7.303-047.0	Screw M6x16 -St-R3R (In6Rd)	12.000	ST	0000000000	0000000000	
	13	6.373-406.0	Pipe clamp 13	2.000	ST	0000000000	0000000000	
X-X	14	7.311-226.0	Hexagon nut M12-A4-70 ISO 4035	4.000	ST	0000000000	0000000000	
X-X	15	4.332-007.0	Spring	2.000	ST	0000000000	0000000000	
X-X	16	5.317-121.0	Bolt	2.000	ST	0000000000	0000000000	
X-X	17	7.343-005.0	Locking ring 16x1-FST-PHR DIN 471	2.000	ST	0000000000	0000000000	
X-X	18	6.312-118.0	Washer 6003 ZAV	4.000	ST	0000000000	0000000000	
X-X	19	6.504-074.0	Hydraulic cylinder	2.000	ST	0000000000	0000000000	
X-X	20	6.504-075.0	Hydraulic cylinder	2.000	ST	0000000000	0000000000	
X	21	6.312-119.0	Washer A17	2.000	ST	0000000000	0000000000	
	22	5.008-565.0	Sheet metal component spacer motor KW	1.000	ST			

61 Reversing rolling mill Version 1 (0.208-063.0)

ET/VT (spare/wear parts)	Pos	Material #	Name	Qty.	Unit	from ser.nr.	up to ser.nr.	var. information
X-X	24	7.343-008.0	Locking ring 25x1,2-St-vz DIN 471	1.000	ST	0000000000	0000000000	
X-X	25	7.401-110.0	Ball bearing 6005-2RS-WAELZLAGST DIN 62	1.000	ST	0000000000	0000000000	
X	26	5.100-460.0	Shaft transmission KW	1.000	ST	0000000000	0000000000	
X	27	4.120-210.0	Hub motor reversing rolling mill	1.000	ST	0000000000	0000000000	
X-X	28	7.318-084.0	Parallel key 5x5x12 -C45R DIN 6885-1	1.000	ST	0000000000	0000000000	
X-X	29	7.306-118.0	Screw M 6x35 -8.8-R3R (In6Rd)	4.000	ST	0000000000	0000000000	
	30	6.373-504.0	Pipe clamp 22	2.000	ST	0000000000	0000000000	
	31	5.625-450.0	Belt pulley	1.000	ST	0000000000	0000000000	
X-X	32	7.312-276.0	Washer 6 -200HV-A2E ISO7093-1	1.000	ST	0000000000	0000000000	
X-X	33	7.304-536.0	Hexagonal head screw M 6x20-A4-70 ISO 4	1.000	ST	0000000000	0000000000	
X-X	34	6.348-414.0	Belt Poly-V	1.000	ST	0000000000	0000000000	Version 1+2
	35	5.625-408.0	Belt pulley 137.5	1.000	ST	0000000000	0000000000	
X-X	36	6.316-054.0	Bolt	1.000	ST	0000000000	0000000000	
X-X	37	7.462-023.0	Angle joint CS13 -A2E DIN 71802	1.000	ST	0000000000	0000000000	
	38	7.312-261.0	Washer 8 -100HV-A3E ISO 7094	1.000	ST	0000000000	0000000000	
X-X	39	7.304-407.0	Hexagonal head screw M 8x45-8.8-A2E ISO	1.000	ST	0000000000	0000000000	
	40	6.431-234.0	Rope	1.000	ST	0000000000	0000000000	
	41	7.304-404.0	Hexagonal head screw M8x40-8.8-A2E ISO	1.000	ST	0000000000	0000000000	
X-X	42	7.311-510.0	Hexagon nut M 8-8-A2E ISO 7040	1.000	ST	0000000000	0000000000	
	44	5.321-396.0	Turning knob	1.000	ST	0000000000	0000000000	
	45	7.462-010.0	Fork head G 12x48-ST-A2E DIN71752	1.000	ST	0000000000	0000000000	
	46	5.059-715.0	Sheet metal component right	1.000	ST	0000000000	0000000000	
	47	5.059-664.0	Sheet metal component lever	1.000	ST	0000000000	0000000000	
Position text: VERSION 1								
X	48	5.112-737.0	Bush	1.000	ST	0000000000	0000000000	

61 Reversing rolling mill Version 1 (0.208-063.0)

ET/VT (spare/wear parts)	Pos	Material #	Name	Qty.	Unit	from ser.nr.	up to ser.nr.	var. information
	49	5.057-911.0	Sheet metal component lever right	1.000	ST	0000000000	0000000000	
Position text: VERSION 2								
	50	5.058-939.0	Sheet metal component lever left	1.000	ST	0000000000	0000000000	
Position text: VERSION 1								
	51	5.057-913.0	Sheet metal component lever left BAT	1.000	ST	0000000000	0000000000	
Position text: VERSION 2								
	52	5.059-716.0	Sheet metal component left	1.000	ST			
	53	2.850-837.0	Sweep drive fresh air feeder	1.000	ST			
X	54	6.389-507.0	Hose clip 20- 32	1.000	ST			
	55	6.391-682.0	Hose	1.000	ST			
X-X	56	6.647-081.0	Cable tape	1.000	ST			
	57	5.061-668.0	Sheet metal component lever left	1.000	ST			Version 3
	58	5.061-669.0	Sheet metal component lever right	1.000	ST			Version 3
X	59	5.474-038.0	Carrier left reversing rolling mill	1.000	ST			
X	60	5.474-036.0	Carrier reversing rolling mill	1.000	ST			
	61	5.058-935.0	Sheet metal component holder vac motor	1.000	ST			
	62	5.112-729.0	Bush	1.000	ST			
	63	6.321-054.0	Star handle M8X16	1.000	ST			
X-X	64	6.348-414.0	Belt Poly-V	1.000	ST			Version 3
	100	2.641-912.0	Conversion kit motor bulk waste flap	1.000	ST			
	110	7.777-999.0	Stockpiling discontinued	1.000	ST			
	120	7.777-999.0	Stockpiling discontinued	1.000	ST			
	130	2.641-912.0	Conversion kit motor bulk waste flap	1.000	ST			



62 Reversing rolling mill Version 2 (0.209-272.0)

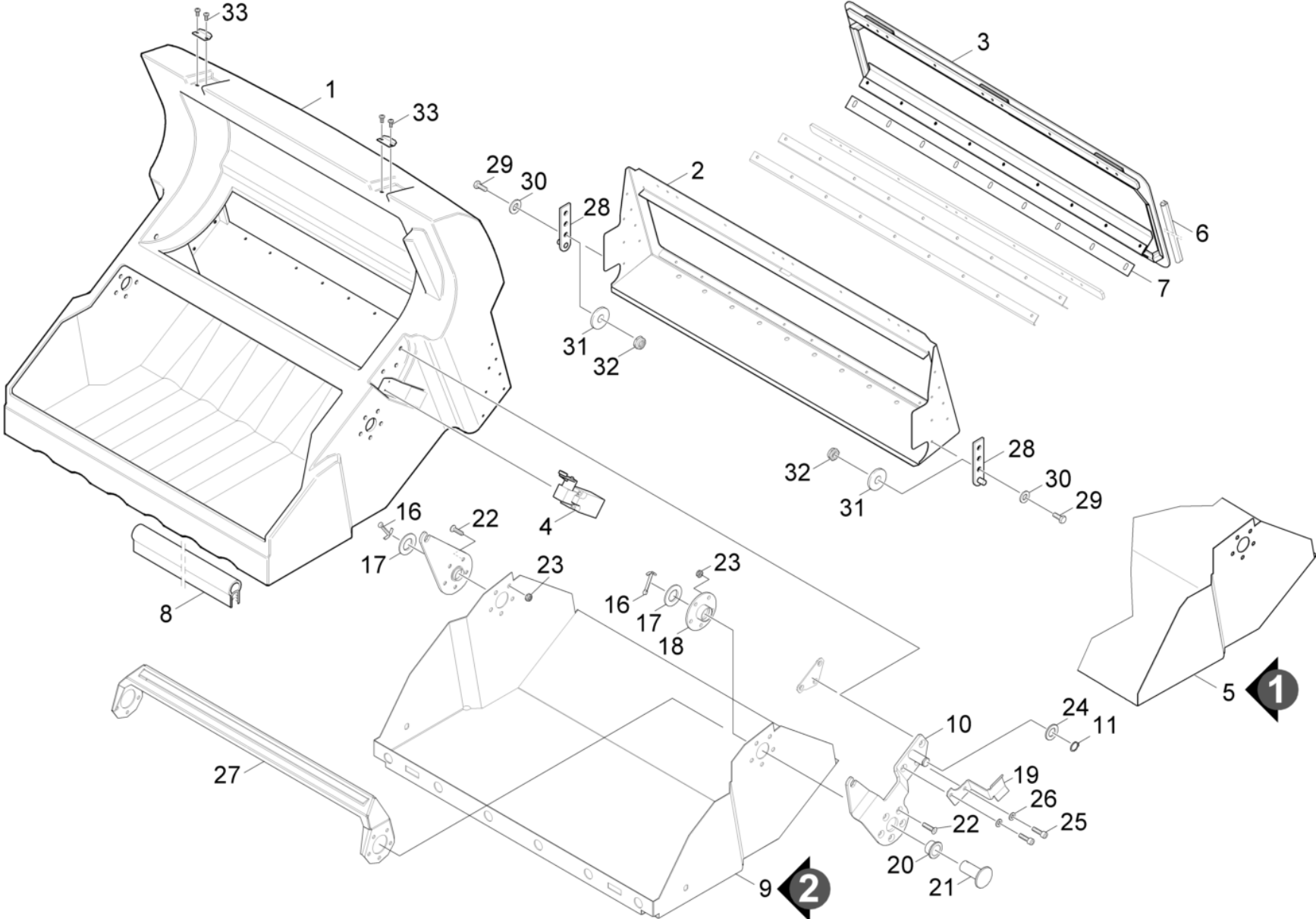
ET/VT (spare/wear parts)	Pos	Material #	Name	Qty.	Unit	from ser.nr.	up to ser.nr.
X-X	1	6.613-286.0	Direct current motor	1.000	ST	0000000000	0000000000
X	2	7.318-070.0	Parallel key 5x5x20-C45R DIN 6885-1	1.000	ST	0000000000	0000000000
X-X	3	6.610-239.0	Carbon brush set ATAS	1.000	ST	0000000000	0000000000
X-X	4	7.343-115.0	Locking ring 47x1,75 -St-ph DIN 472	1.000	ST	0000000000	0000000000
X-X	5	7.312-025.0	Washer 27-200HV-A3E ISO7090	2.000	ST	0000000000	0000000000
X-X	6	7.312-289.0	Washer 8 -A2 ISO 7093-1	5.000	ST	0000000000	0000000000
	7	7.304-395.0	Hexagonal head screw M8x16-8.8-A2E ISO	2.000	ST	0000000000	0000000000
X-X	8	6.906-624.0	Reversing rolling mill KM 120/150	1.000	ST	0000000000	0000000000
	8	6.906-722.0	Reversing rolling mill soft	1.000	ST	0000000000	0000000000
X	8	6.906-723.0	Reversing rolling mill hard	1.000	ST	0000000000	0000000000
X-X	9	7.343-045.0	Lock washer 24-FST-A2E DIN 6799	2.000	ST	0000000000	0000000000
X-X	10	7.401-105.0	Ball bearing 6003-2RS Wälzl.St DIN 625	9.000	ST	0000000000	0000000000
X-X	11	5.122-449.0	Flange 6kt55 (Stahl)	3.000	ST	0000000000	0000000000
	12	7.306-090.0	Screw M6x16 -8.8-R3R (In6Rd)	13.000	ST	0000000000	0000000000
	13	6.373-406.0	Pipe clamp 13	2.000	ST	0000000000	0000000000
X-X	14	7.311-226.0	Hexagon nut M12-A4-70 ISO 4035	6.000	ST	0000000000	0000000000
X-X	15	4.332-007.0	Spring	2.000	ST	0000000000	0000000000
X-X	16	5.317-121.0	Bolt	2.000	ST	0000000000	0000000000
X-X	17	7.343-005.0	Locking ring 16x1-FST-PHR DIN 471	1.000	ST	0000000000	0000000000
X-X	18	6.312-118.0	Washer 6003 ZAV	3.000	ST	0000000000	0000000000
X-X	19	6.504-074.0	Hydraulic cylinder	2.000	ST	0000000000	0000000000
X-X	20	6.504-075.0	Hydraulic cylinder	2.000	ST	0000000000	0000000000
X	21	6.312-119.0	Washer A17	2.000	ST	0000000000	0000000000
	22	5.008-565.0	Sheet metal component spacer motor KW	1.000	ST		
X-X	24	7.343-008.0	Locking ring 25x1,2-St-vz DIN 471	1.000	ST	0000000000	0000000000

62 Reversing rolling mill Version 2 (0.209-272.0)

ET/VT (spare/wear parts)	Pos	Material #	Name	Qty.	Unit	from ser.nr.	up to ser.nr.
X-X	25	7.401-110.0	Ball bearing 6005-2RS-WAELZLAGST DIN 62	1.000	ST	0000000000	0000000000
	26	5.100-595.0	Shaft transmission reversing rolling mil	1.000	ST	0000000000	0000000000
X	27	4.120-210.0	Hub motor reversing rolling mill	1.000	ST	0000000000	0000000000
X-X	28	7.318-084.0	Parallel key 5x5x12 -C45R DIN 6885-1	1.000	ST	0000000000	0000000000
X-X	29	7.306-118.0	Screw M 6x35 -8.8-R3R (In6Rd)	4.000	ST	0000000000	0000000000
	30	6.373-504.0	Pipe clamp 22	2.000	ST	0000000000	0000000000
	31	5.625-450.0	Belt pulley	1.000	ST	0000000000	0000000000
X-X	32	7.312-276.0	Washer 6 -200HV-A2E ISO7093-1	1.000	ST	0000000000	0000000000
X-X	33	7.304-536.0	Hexagonal head screw M 6x20-A4-70 ISO 4	1.000	ST	0000000000	0000000000
X-X	34	6.348-414.0	Belt Poly-V	1.000	ST	0000000000	0000000000
	35	5.625-408.0	Belt pulley 137.5	1.000	ST	0000000000	0000000000
X-X	36	7.304-399.0	Hexagonal head screw M 8x25-8.8-A2E ISO	3.000	ST	0000000000	0000000000
X-X	37	7.462-023.0	Angle joint CS13 -A2E DIN 71802	1.000	ST	0000000000	0000000000
	38	7.312-261.0	Washer 8 -100HV-A3E ISO 7094	6.000	ST	0000000000	0000000000
X-X	39	7.304-504.0	Hexagonal head screw M8x50-A2-70 ISO 40	1.000	ST	0000000000	0000000000
	40	6.431-234.0	Rope	1.000	ST	0000000000	0000000000
	41	7.304-404.0	Hexagonal head screw M8x40-8.8-A2E ISO	1.000	ST	0000000000	0000000000
X-X	42	7.311-510.0	Hexagon nut M 8-8-A2E ISO 7040	1.000	ST	0000000000	0000000000
	44	5.321-396.0	Turning knob	1.000	ST	0000000000	0000000000
	45	7.462-010.0	Fork head G 12x48-ST-A2E DIN71752	1.000	ST	0000000000	0000000000
	46	5.059-715.0	Sheet metal component right	1.000	ST	0000000000	0000000000
X	48	5.112-737.0	Bush	1.000	ST	0000000000	0000000000
X-X	49	5.110-913.0	Bush	3.000	ST		
	50	6.401-439.0	Angular contact ball bearing 3003-B-2RSR	1.000	ST		
X-X	51	7.343-017.0	Locking ring 35x1,5-FST-PHR DIN 472	1.000	ST		

62 Reversing rolling mill Version 2 (0.209-272.0)

ET/VT (spare/wear parts)	Pos	Material #	Name	Qty.	Unit	from ser.nr.	up to ser.nr.
	52	5.059-716.0	Sheet metal component left	1.000	ST		
	53	2.850-837.0	Sweep drive fresh air feeder	1.000	ST		
X	54	6.389-507.0	Hose clip 20- 32	1.000	ST		
	55	6.391-682.0	Hose	1.000	ST		
X-X	56	6.647-081.0	Cable tape	1.000	ST		
	57	5.061-668.0	Sheet metal component lever left	1.000	ST		
	58	5.061-669.0	Sheet metal component lever right	1.000	ST		
X	59	5.474-038.0	Carrier left reversing rolling mill	1.000	ST		
X	60	5.474-036.0	Carrier reversing rolling mill	1.000	ST		
	61	5.058-935.0	Sheet metal component holder vac motor	1.000	ST		
	62	5.112-854.0	Bush	1.000	ST		
	63	6.321-054.0	Star handle M8X16	1.000	ST		
X-X	64	7.311-427.0	Hexagon nut M8 -04-A2E ISO 10511	3.000	ST		
	65	6.613-173.0	Direct current motor 24V DC	1.000	ST		
	66	5.100-593.0	Bearing flange	1.000	ST		
	100	2.641-912.0	Conversion kit motor bulk waste flap	1.000	ST		
	110	7.777-999.0	Stockpiling discontinued	1.000	ST		
	120	7.777-999.0	Stockpiling discontinued	1.000	ST		



63 Tank refuse (0.208-020.0)

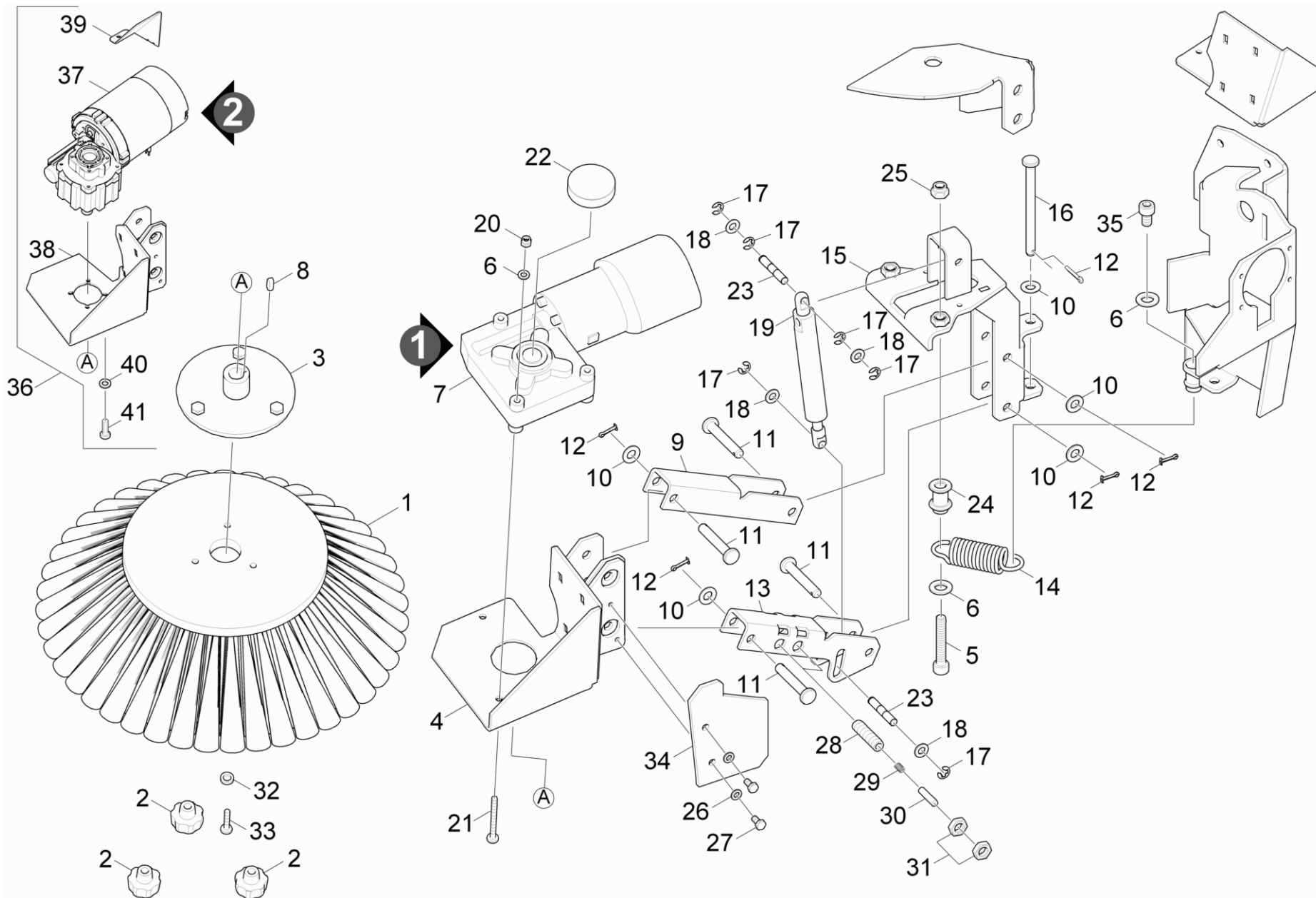
ET/VT (spare/wear parts)	Pos	Material #	Name	Qty.	Unit	from ser.nr.	up to ser.nr.	Footnote text
	1	5.032-576.0	Sweep tank	1.000	ST	0000000000	0000000000	
	2	5.058-779.0	Sheet metal component sweep tank	1.000	ST	0000000000	0000000000	
	3	4.040-350.0	Sheet metal component complete	1.000	ST	0000000000	0000000000	
X-X	4	6.630-170.0	Position switch	1.000	ST	0000000000	0000000000	
	5	5.057-158.0	Sheet metal component sweep tank	1.000	ST	0000000000	0000010010	
	6	6.365-497.0	Sealing profile	1.000	M	0000000000	0000000000	TO ORDER AS CUT GOODS
	7	5.365-263.0	Rubber lip	1.000	ST	0000000000	0000000000	
X-X	8	6.365-498.0	Sealing profile	1.000	M	0000000000	0000000000	TO ORDER AS CUT GOODS
	9	5.057-673.0	Sheet metal component jacket sweep tank	1.000	ST	0000010011	0000000000	
X	10	4.040-587.0	Sheet metal component	1.000	ST	0000000000	0000000000	
X-X	11	7.343-007.0	Locking ring 20x1,2-FST-RF DIN 471	1.000	ST	0000000000	0000000000	
X-X	12	7.312-013.0	Washer 20-A2 ISO 7090	1.000	ST	0000000000	0000000000	
X-X	13	7.305-004.0	Countersunk screw M8x30-A2-70 ISO10642	13.000	ST	0000000000	0000000000	
	14	4.040-441.0	Sheet metal component complete	1.000	ST			
X	16	7.316-438.0	Cotter 6,3x50 -St-A2E ISO 1234	2.000	ST			
X-X	17	7.312-025.0	Washer 27-200HV-A3E ISO7090	2.000	ST			
	18	4.122-126.0	Flange complete	1.000	ST			
X	19	5.062-324.0	Sheet metal component hose	1.000	ST			
X	20	5.112-722.0	Bush	1.000	ST			
X	21	5.100-473.0	Shaft KB	1.000	ST			
X-X	22	7.305-004.0	Countersunk screw M8x30-A2-70 ISO10642	11.000	ST			
X-X	23	7.311-432.0	Hexagon nut M 8-1.4305 ISO 10511	6.000	ST			
X-X	24	7.312-013.0	Washer 20-A2 ISO 7090	1.000	ST			
X-X	25	7.306-043.0	Cylinder head screw M8x30 -8.8-A2E ISO	2.000	ST			
X-X	26	7.312-017.0	Washer 8-A2 ISO 7089	2.000	ST			

63 Tank refuse (0.208-020.0)

ET/VT (spare/wear parts)	Pos	Material #	Name	Qty.	Unit	from ser.nr.	up to ser.nr.	Footnote text
	27	5.057-155.0	Sheet metal component stay sweep tank	1.000	ST			
	28	4.007-024.0	Plate complete	2.000	ST			
	29	7.304-419.0	Hexagonal head screw M10x35-8.8-A3E ISO	6.000	ST			
X-X	30	7.312-005.0	Washer 10-200HV-A3E ISO 7090	6.000	ST			
	31	7.312-285.0	Washer 10 -200HV-A2E ISO7093-1	6.000	ST			
X-X	32	7.311-423.0	Hexagon nut M10 -04-A2E ISO 10511	6.000	ST			
X	33	7.306-071.0	Screw M5x10 -8.8-R2R (In6Rd)	4.000	ST			

70 Side broom (0.209-753.0)

Pos	Material #	Name	Qty.	Unit
71	0.209-238.0	Side broom right	1.000	ST
72	0.209-240.0	Side broom left	1.000	ST



71 Side broom right (0.209-238.0)

ET/VT (spare/wear parts)	Pos	Material #	Name	Qty.	Unit	from ser.nr.	up to ser.nr.
X-X	1	6.906-721.0	Side broom hard D 600	1.000	ST	0000000000	0000000000
X-X	1	6.906-720.0	Side broom soft D 600	1.000	ST	0000000000	0000000000
X-X	1	6.906-705.0	Side broom D 600	1.000	ST	0000000000	0000000000
X-X	2	6.310-066.0	Star grip M 8	3.000	ST	0000000000	0000000000
	3	4.040-353.0	Retainer side broom	1.000	ST	0000000000	0000000000
	4	4.040-430.0	Electric motor holder right	1.000	ST	0000000000	0000000000
	5	7.306-070.0	Cylinder head screw M10x60-8.8-A3E DIN	3.000	ST	0000000000	0000000000
	6	7.312-008.0	Washer 12-200HV-A3E ISO 7090	6.000	ST	0000000000	0000000000
	7	6.454-188.0	Gear motor side broom right	1.000	ST	0000000000	0000000000
X-X	8	7.318-002.0	Parallel key 5x5x16 -C45R DIN 6885-1	1.000	ST	0000000000	0000000000
	9	5.062-082.0	Rhomboid above	1.000	ST	0000000000	0000000000
X-X	10	7.312-005.0	Washer 10-200HV-A3E ISO 7090	5.000	ST	0000000000	0000000000
X	11	7.316-226.0	Bolt B-10x60-St-A2E ISO 2341	4.000	ST	0000000000	0000000000
X-X	12	7.316-341.0	Cotter 3,2x16-St-A2E ISO 1234	5.000	ST	0000000000	0000000000
	13	5.062-083.0	Rhomboid bottom	1.000	ST	0000000000	0000000000
X-X	14	6.330-432.0	Extension spring	1.000	ST	0000000000	0000000000
	15	4.040-443.0	Retainer rhomboid	1.000	ST	0000000000	0000000000
X-X	16	7.316-215.0	Bolt B10,0x100-ST-A2E ISO 2341	1.000	ST	0000000000	0000000000
	17	7.343-300.0	Lock washer 7-A2 DIN 6799	8.000	ST	0000000000	0000000000
X-X	18	7.312-004.0	Washer 8 -200HV-A3E ISO 7090	4.000	ST	0000000000	0000000000
X-X	19	6.504-059.0	Hydraulic cylinder	1.000	ST	0000000000	0000000000
X	20	7.311-512.0	Hexagon nut M 6-8-A2E ISO 7040	3.000	ST	0000000000	0000000000
	21	7.306-268.0	Screw M6x70 -8.8-R3R (In6Rd)	3.000	ST	0000000000	0000000000
X	22	6.368-399.0	Protecting cap	1.000	ST	0000000000	0000000000
	23	5.100-459.0	Shaft	1.000	ST		

71 Side broom right (0.209-238.0)

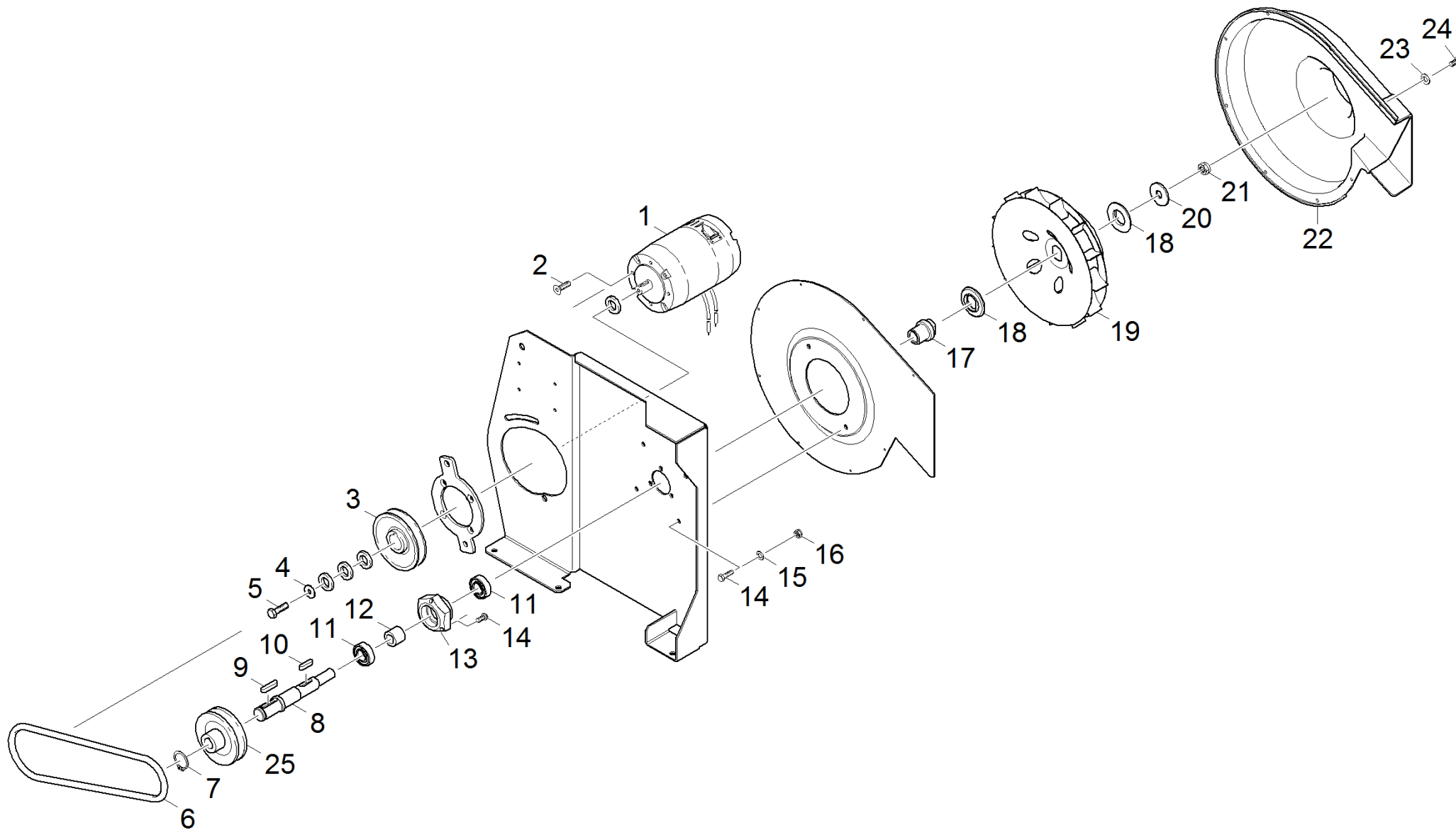
ET/VT (spare/wear parts)	Pos	Material #	Name	Qty.	Unit	from ser.nr.	up to ser.nr.
	24	5.100-587.0	Sleeve	1.000	ST		
X-X	25	7.311-511.0	Hexagon nut M10-8-A2E ISO 7040	1.000	ST		
X-X	26	7.312-003.0	Washer 6 -200HV-A3E ISO 7090	2.000	ST		
X	27	7.304-382.0	Hexagonal head screw M 6x12-8.8-A2E ISO	2.000	ST		
X-X	28	5.317-121.0	Bolt	2.000	ST		
	29	6.330-225.0	Pressure spring	2.000	ST		
	30	5.062-116.0	Rubber damper	2.000	ST		
	31	7.311-220.0	Hexagon nut M12-04-A2E ISO 4035	4.000	ST		
X	32	7.312-260.0	Washer 6 -100HV-A3E ISO 7094	1.000	ST		
X-X	33	7.306-031.0	Screw M 6x16-A2-70 DIN 7984	1.000	ST		
	34	5.062-115.0	Sheet metal component rubber contact sur	1.000	ST		
	35	7.306-060.0	Cylinder head screw M10x16-8.8-A3E ISO	1.000	ST		
	36	2.642-138.0	Conversion kit side broom right	1.000	ST		
	37	6.454-201.0	Gear motor right 24 VDC	1.000	ST		
	38	4.040-807.0	Electric motor holder right V3	1.000	ST		
	39	5.062-201.0	Closure cap	1.000	ST		
X	40	7.312-002.0	Washer 5-200HV-A3E ISO 7090	1.000	ST		
X	41	7.306-076.0	Screw M 5x12-ST- 8.8-A2R (IN6RD)	1.000	ST		
	100	2.882-660.0	Conversion kit side broom base	1.000	ST		

72 Side broom left (0.209-240.0)

ET/VT (spare/wear parts)	Pos	Material #	Name	Qty.	Unit	from ser.nr.	up to ser.nr.
X-X	1	6.906-721.0	Side broom hard D 600	1.000	ST	0000000000	0000000000
X-X	1	6.906-720.0	Side broom soft D 600	1.000	ST	0000000000	0000000000
X-X	1	6.906-705.0	Side broom D 600	1.000	ST	0000000000	0000000000
X-X	2	6.310-066.0	Star grip M 8	3.000	ST	0000000000	0000000000
	3	4.040-353.0	Retainer side broom	1.000	ST	0000000000	0000000000
	4	4.040-433.0	Electric motor holder left	1.000	ST	0000000000	0000000000
	5	7.306-070.0	Cylinder head screw M10x60-8.8-A3E DIN	3.000	ST	0000000000	0000000000
	6	7.312-008.0	Washer 12-200HV-A3E ISO 7090	6.000	ST	0000000000	0000000000
	7	6.454-187.0	Gear motor side broom left	1.000	ST	0000000000	0000000000
X-X	8	7.318-002.0	Parallel key 5x5x16 -C45R DIN 6885-1	1.000	ST	0000000000	0000000000
	9	5.062-082.0	Rhomboid above	1.000	ST	0000000000	0000000000
X-X	10	7.312-005.0	Washer 10-200HV-A3E ISO 7090	5.000	ST	0000000000	0000000000
X	11	7.316-226.0	Bolt B-10x60-St-A2E ISO 2341	4.000	ST	0000000000	0000000000
X-X	12	7.316-341.0	Cotter 3,2x16-St-A2E ISO 1234	5.000	ST	0000000000	0000000000
	13	5.062-083.0	Rhomboid bottom	1.000	ST	0000000000	0000000000
X-X	14	6.330-432.0	Extension spring	1.000	ST	0000000000	0000000000
	15	4.040-443.0	Retainer rhomboid	1.000	ST	0000000000	0000000000
X-X	16	7.316-215.0	Bolt B10,0x100-ST-A2E ISO 2341	1.000	ST	0000000000	0000000000
	17	7.343-300.0	Lock washer 7-A2 DIN 6799	8.000	ST	0000000000	0000000000
X-X	18	7.312-004.0	Washer 8 -200HV-A3E ISO 7090	4.000	ST	0000000000	0000000000
X-X	19	6.504-059.0	Hydraulic cylinder	1.000	ST	0000000000	0000000000
X	20	7.311-512.0	Hexagon nut M 6-8-A2E ISO 7040	3.000	ST	0000000000	0000000000
	21	7.306-268.0	Screw M6x70 -8.8-R3R (In6Rd)	3.000	ST	0000000000	0000000000
X	22	6.368-399.0	Protecting cap	1.000	ST	0000000000	0000000000
	23	5.100-459.0	Shaft	1.000	ST		

72 Side broom left (0.209-240.0)

ET/VT (spare/wear parts)	Pos	Material #	Name	Qty.	Unit	from ser.nr.	up to ser.nr.
	24	5.100-587.0	Sleeve	1.000	ST		
X-X	25	7.311-511.0	Hexagon nut M10-8-A2E ISO 7040	1.000	ST		
X-X	26	7.312-003.0	Washer 6 -200HV-A3E ISO 7090	2.000	ST		
X	27	7.304-382.0	Hexagonal head screw M 6x12-8.8-A2E ISO	2.000	ST		
X-X	28	5.317-121.0	Bolt	2.000	ST		
	29	6.330-225.0	Pressure spring	2.000	ST		
	30	5.062-116.0	Rubber damper	2.000	ST		
	31	7.311-220.0	Hexagon nut M12-04-A2E ISO 4035	4.000	ST		
X	32	7.312-260.0	Washer 6 -100HV-A3E ISO 7094	1.000	ST		
X-X	33	7.306-031.0	Screw M 6x16-A2-70 DIN 7984	1.000	ST		
	34	5.062-115.0	Sheet metal component rubber contact sur	1.000	ST		
	35	7.306-060.0	Cylinder head screw M10x16-8.8-A3E ISO	1.000	ST		
	36	4.040-431.0	Broom suspension left	1.000	ST		
	37	2.642-139.0	Conversion kit side broom left	1.000	ST		
	38	6.454-202.0	Gear motor left 24 VDC	1.000	ST		
	39	4.040-808.0	Electric motor holder left V3	1.000	ST		
X	40	7.312-002.0	Washer 5-200HV-A3E ISO 7090	4.000	ST		
X	41	7.306-076.0	Screw M 5x12-ST- 8.8-A2R (IN6RD)	4.000	ST		
	42	6.644-456.0	Safety cutout motorcar 25 A	1.000	ST		



80 Blower (0.208-067.0)

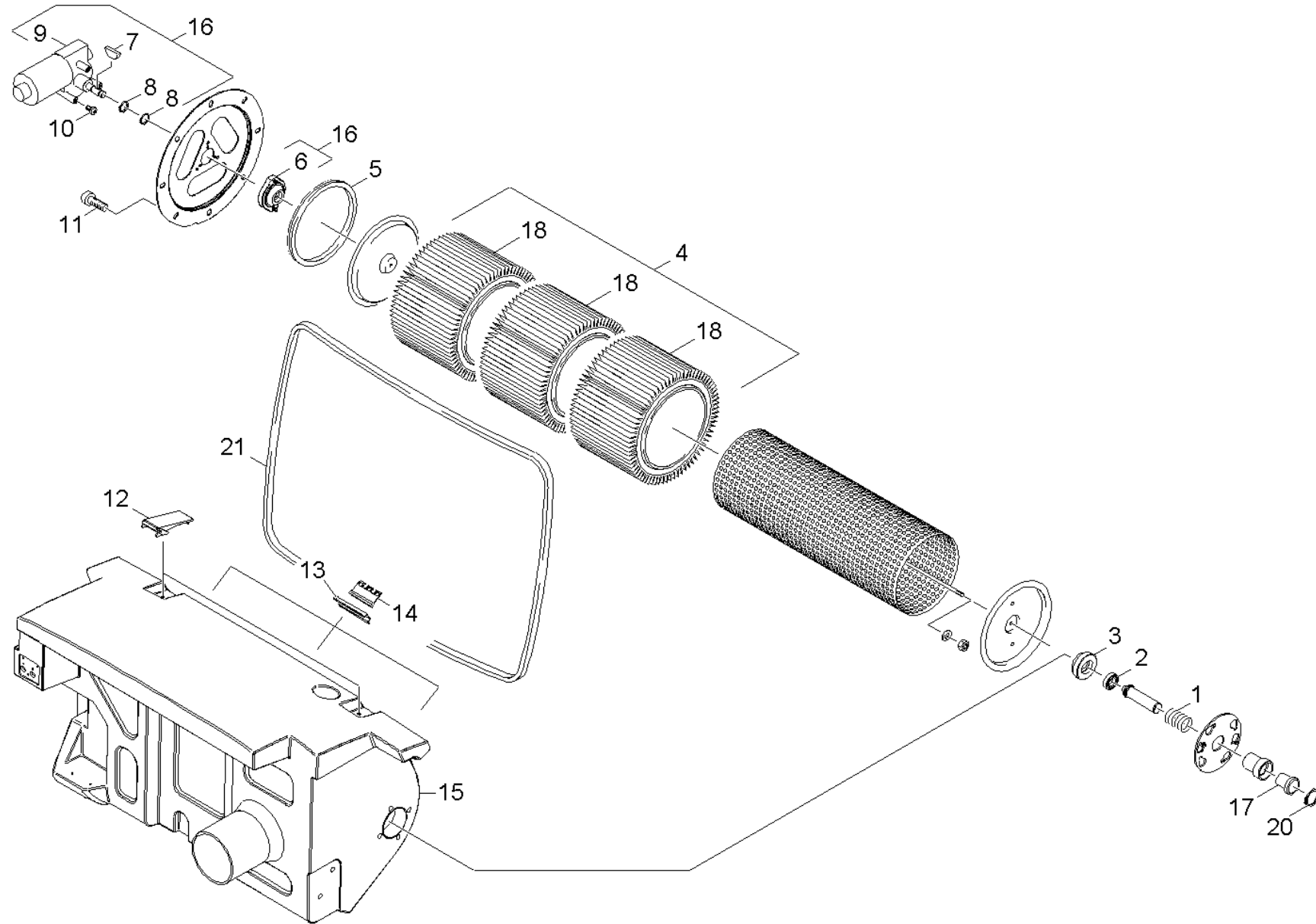
ET/VT (spare/wear parts)	Pos	Material #	Name	Qty.	Unit	from ser.nr.	up to ser.nr.
X-X	1	6.613-286.0	Direct current motor	1.000	ST	0000000000	0000000000
	3	5.625-418.0	Belt pulley	1.000	ST	0000000000	0000000000
X-X	4	7.312-276.0	Washer 6 -200HV-A2E ISO7093-1	1.000	ST	0000000000	0000000000
X-X	5	7.304-536.0	Hexagonal head screw M 6x20-A4-70 ISO 4	1.000	ST	0000000000	0000000000
	6	6.348-130.0	Narrow V-belt SPZ 812	1.000	ZSA	0000000000	0000000000
	7	7.343-006.0	Locking ring 17x1-St-ph DIN 471	1.000	ST	0000000000	0000000000
X-X	8	5.100-413.0	Shaft blower	1.000	ST	0000000000	0000000000
X-X	9	7.318-079.0	Parallel key A 5x5x25-C45R DIN 6885	1.000	ST	0000000000	0000000000
X	10	7.318-070.0	Parallel key 5x5x20-C45R DIN 6885-1	1.000	ST	0000000000	0000000000
X-X	11	7.401-105.0	Ball bearing 6003-2RS Wälzl.St DIN 625	2.000	ST	0000000000	0000000000
X-X	12	5.110-913.0	Bush	1.000	ST	0000000000	0000000000
X-X	13	5.122-449.0	Flange 6kt55 (Stahl)	1.000	ST	0000000000	0000000000
	14	7.303-047.0	Screw M6x16 -St-R3R (In6Rd)	3.000	ST	0000000000	0000000000
X-X	15	7.312-003.0	Washer 6 -200HV-A3E ISO 7090	2.000	ST	0000000000	0000000000
X-X	16	7.311-425.0	Hexagon nut M6 -04-A2E ISO 10511	2.000	ST	0000000000	0000000000
X-X	17	5.112-651.0	Bush transmission blower	1.000	ST	0000000000	0000000000
X-X	18	6.312-046.0	Spacer washer	2.000	ST	0000000000	0000000000
X-X	19	6.484-326.0	Blower wheel D=222mm	1.000	ST	0000000000	0000000000
X-X	20	7.312-287.0	Washer 12-200HV-A2E ISO7093-1	1.000	ST	0000000000	0000000000
X-X	21	7.311-429.0	Hexagon nut M12-04-A2E ISO 10511	1.000	ST	0000000000	0000000000
X-X	22	6.961-164.0	Housing	1.000	ST	0000000000	0000000000
	23	7.312-001.0	Washer 4 -200HV-A3E ISO 7089	8.000	ST	0000000000	0000000000
	24	7.303-030.0	Screw M4x8 -St-P2R (In6Rd)	8.000	ST	0000000000	0000000000
	25	5.625-443.0	Belt pulley	1.000	ST	0000000000	0000000000
X-X	100	6.610-239.0	Carbon brush set ATAS	1.000	ST	0000000000	0000000000

80 Blower (0.208-067.0)

ET/VT (spare/wear parts)	Pos	Material #	Name	Qty.	Unit	from ser.nr.	up to ser.nr.
	110	7.777-999.0	Stockpiling discontinued	1.000	ST		
	120	7.777-999.0	Stockpiling discontinued	1.000	ST		

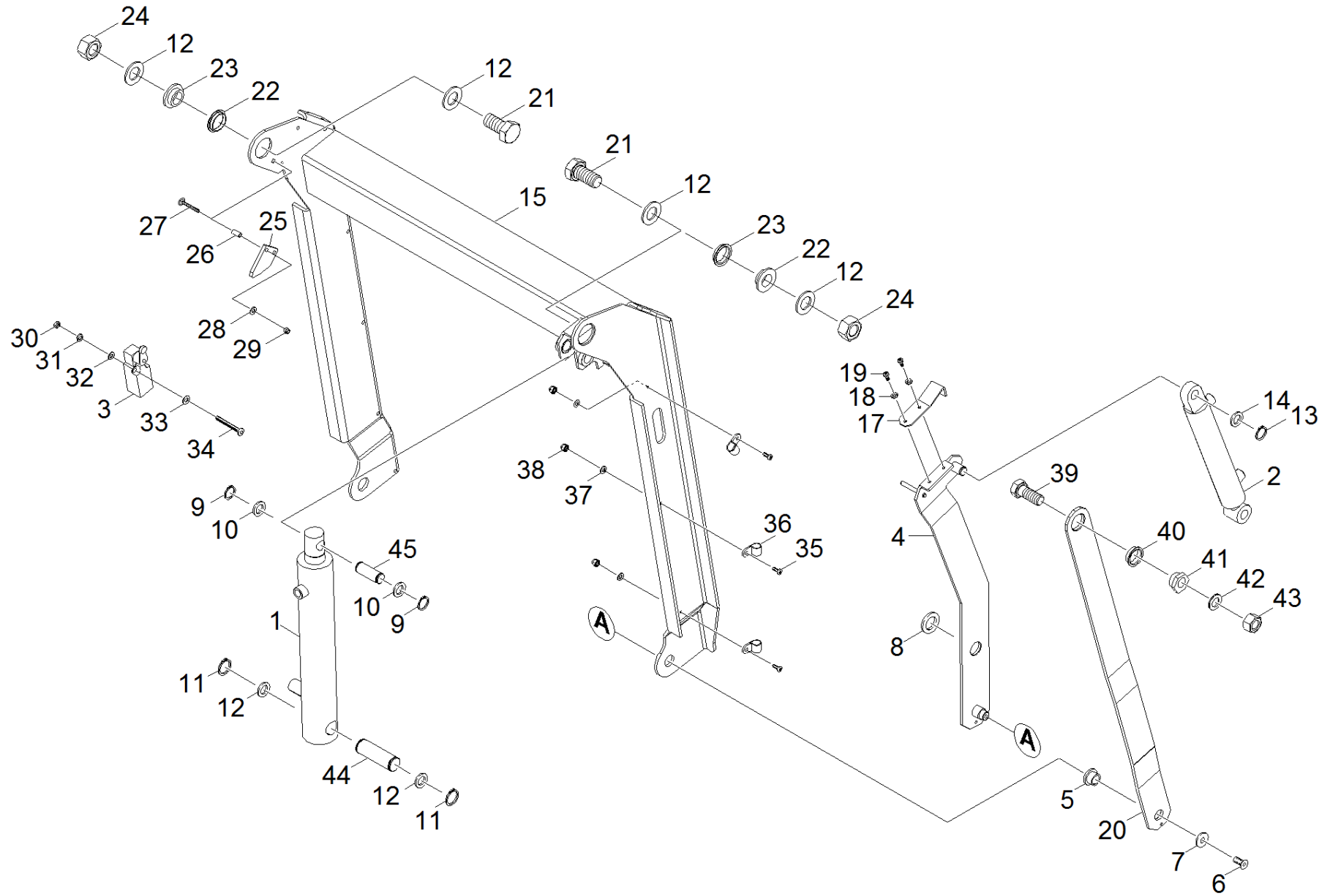
90 Filter unit (0.208-068.0)

Pos	Material #	Name	Qty.	Unit	from ser.nr.	up to ser.nr.
91	0.208-069.0	Filter box	1.000	ST	0000000000	0000000000
92	0.208-022.0	High emptying	1.000	ST	0000000000	0000000000



91 Filter box (0.208-069.0)

ET/VT (spare/wear parts)	Pos	Material #	Name	Qty.	Unit	from ser.nr.	up to ser.nr.
X-X	1	6.330-210.0	Pressure spring	1.000	ST	0000000000	0000000000
X-X	2	6.401-363.0	Ball bearing	1.000	ST	0000000000	0000000000
X	3	5.474-046.0	Holder-up centring support cartridge fill	1.000	ST	0000000000	0000000000
X-X	4	6.414-554.0	Filter element 3St.	1.000	ST	0000000000	0000000000
X-X	5	6.362-950.0	Joint ring axial	1.000	ST	0000000000	0000000000
X	6	4.474-029.0	Carrier complete	1.000	ST	0000000000	0000000000
X-X	7	7.318-204.0	Curved washer 3x3,7-C45R DIN 6888	1.000	ST	0000000000	0000000000
X-X	8	7.343-003.0	Locking ring 12x1-Rf-St DIN 471	2.000	ST	0000000000	0000000000
	9	6.613-048.0	Gear motor 24V	1.000	ST	0000000000	10004
	10	7.306-090.0	Screw M6x16 -8.8-R3R (In6Rd)	3.000	ST	0000000000	0000000000
	11	6.303-035.0	Screw M8x12-ST-A2E DIN 7500-1	8.000	ST	0000000000	0000000000
	12	6.373-440.0	Snap fastener	8.000	ST	0000000000	0000000000
	13	5.047-736.0	Sheet metal component	3.000	ST	0000000000	0000000000
X-X	14	5.031-344.0	Stripper	3.000	ST	0000000000	0000000000
	15	5.032-575.0	Filter box	1.000	ST	0000000000	0000000000
	16	2.641-084.0	Conversion kit motor filter vibrator	1.000	ST	10004	
X	17	6.403-030.0	Plain bearing	1.000	ST	0000000000	0000000000
X-X	18	6.414-526.0	Filter element Polyester	3.000	ST	0000000000	0000000000
X-X	19	7.306-158.0	Cylinder head screw M 5x20-A4-70 ISO 47	1.000	ST	0000000000	0000000000
X-X	20	7.343-007.0	Locking ring 20x1,2-FST-RF DIN 471	1.000	ST		
X-X	21	6.365-545.0	Seal	1.000	M		
	100	7.777-999.0	Stockpiling discontinued	1.000	ST		

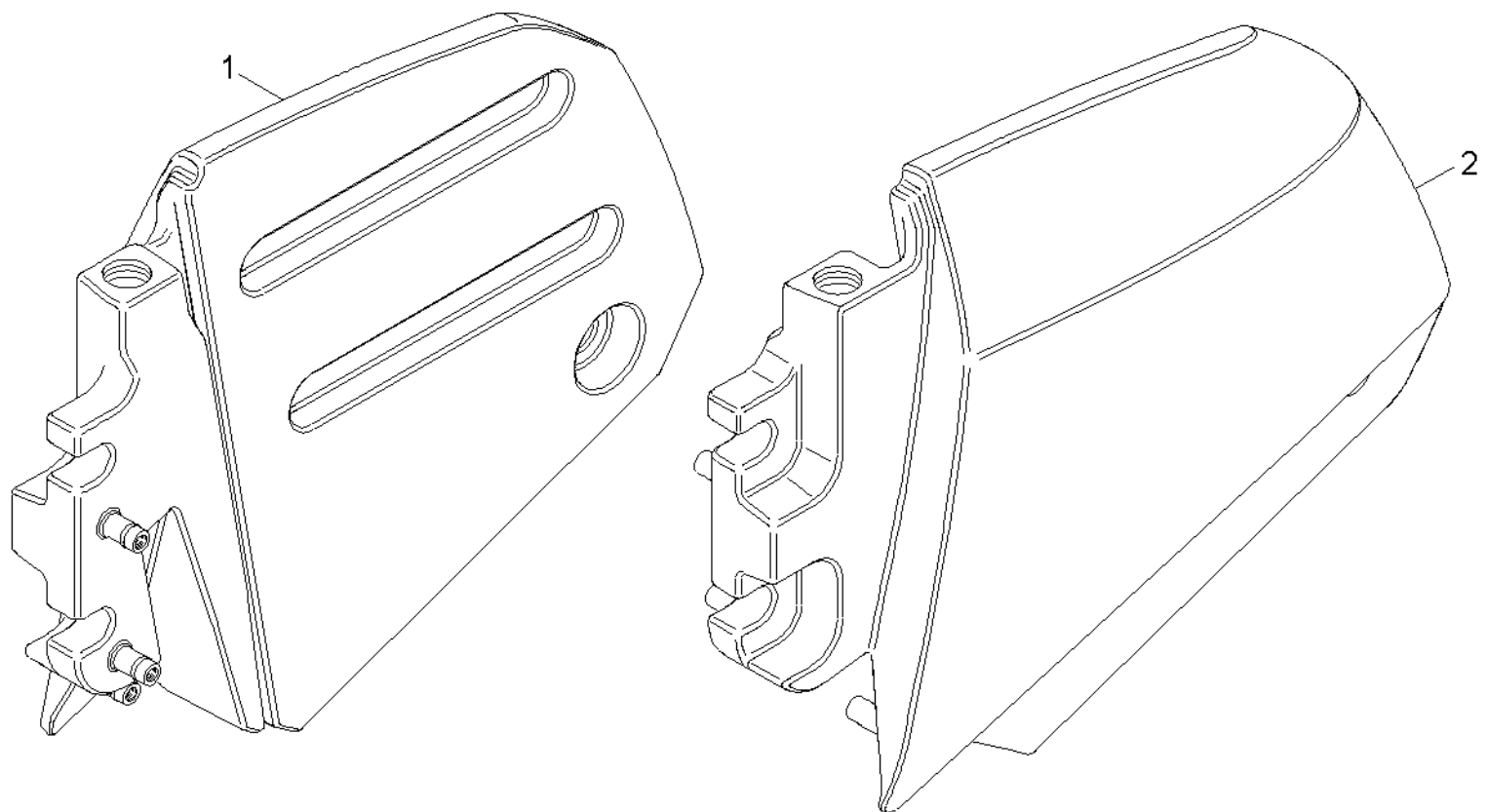


92 High emptying (0.208-022.0)

ET/VT (spare/wear parts)	Pos	Material #	Name	Qty.	Unit	from ser.nr.	up to ser.nr.
	1	6.504-056.0	Hydraulic cylinder	1.000	ST	0000000000	0000000000
	2	6.504-057.0	Hydraulic cylinder	1.000	ST	0000000000	0000000000
X-X	3	6.630-170.0	Position switch	1.000	ST	0000000000	0000000000
X-X	4	4.040-349.0	Sheet metal component complete	1.000	ST		
X	5	5.112-720.0	Bush	1.000	ST		
X	6	7.305-013.0	Countersunk screw M8x20-8.8-A3R ISO1064	1.000	ST		
	7	7.312-262.0	Washer 10 -100HV-A3E ISO 7094	1.000	ST		
X	8	6.312-117.0	Washer	3.000	ST		
X	9	7.343-010.0	Locking ring 22x1,2-FST-PHR DIN 471	2.000	ST		
	10	7.312-024.0	Washer 22-200HV-A3E ISO7090	2.000	ST		
X	11	7.343-009.0	Locking ring 30x1,5-FST-VZ DIN 471	2.000	ST		
	12	7.312-070.0	Washer 30-A2 ISO 7089	6.000	ST		
X-X	13	7.343-007.0	Locking ring 20x1,2-FST-RF DIN 471	1.000	ST		
X-X	14	7.312-013.0	Washer 20-A2 ISO 7090	1.000	ST		
	15	4.040-740.0	Assembly group lifting arm complete	1.000	ST		
X	17	5.062-323.0	Sheet metal component limit switch	1.000	ST		
	18	7.312-045.0	Washer 6-200HV-P4E ISO 7089	2.000	ST		
	19	7.306-090.0	Screw M6x16 -8.8-R3R (In6Rd)	2.000	ST		
	20	5.007-935.0	PLATE	1.000	ST		
	21	7.304-100.0	Hexagonal head screw M30x60-8.8-A3E ISO	2.000	ST		
X	22	6.403-053.0	Plain bearing DM40x10	2.000	ST		
	23	5.112-739.0	Bush	2.000	ST		
	24	7.311-070.0	Hexagon nut M30-8-A3E ISO 4032	2.000	ST		
	25	5.008-395.0	Plate	1.000	ST		
	26	5.112-740.0	Sleeve	2.000	ST		

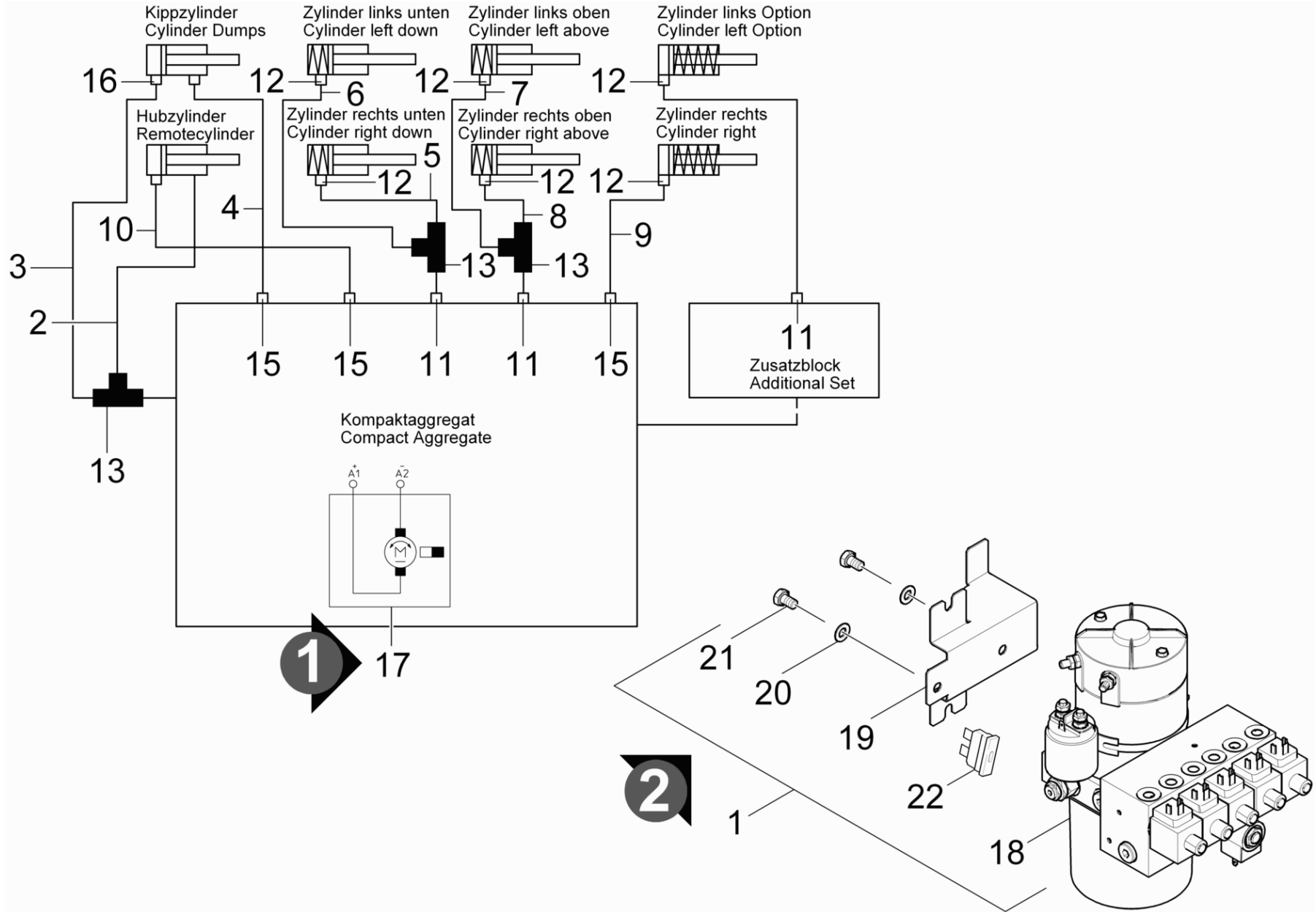
92 High emptying (0.208-022.0)

ET/VT (spare/wear parts)	Pos	Material #	Name	Qty.	Unit	from ser.nr.	up to ser.nr.
	27	7.303-214.0	Saucer-head screw M 6x50-St-A0P DIN 603	2.000	ST		
X-X	28	7.312-003.0	Washer 6 -200HV-A3E ISO 7090	2.000	ST		
X	29	7.311-512.0	Hexagon nut M 6-8-A2E ISO 7040	2.000	ST		
	30	7.311-001.0	Hexagon nut M4 -8-A2E ISO 4032	2.000	ST		
X-X	31	7.313-017.0	Spring washer B 4-1.4310 DIN 127	2.000	ST		
	32	7.312-067.0	Washer 4-A2 ISO 7089	2.000	ST		
	33	7.312-293.0	Washer 4-A2 ISO 7093-1	2.000	ST		
	34	7.306-064.0	Screw M4x40 -8.8-R2R (In6Rd)	2.000	ST		
X	35	7.306-078.0	Screw M5x20 -8.8-R2R (In6Rd)	3.000	ST		
	36	6.373-422.0	Pipe clamp 22	3.000	ST		
X	37	7.312-264.0	Washer 5-100HV-A3E ISO 7094	3.000	ST		
X-X	38	7.311-421.0	Hexagon nut M 5-04-A2E ISO 10511	3.000	ST		
	39	7.304-009.0	Hexagonal head screw M24x60-12.9 ISO 40	1.000	ST		
	40	6.347-113.0	Flanged bushing	1.000	ST		
	41	5.112-721.0	Bush	1.000	ST		
X	42	7.312-010.0	Washer 24 -200HV-A3E ISO 7090	1.000	ST		
	43	7.311-090.0	Hexagon nut M24-8-A3E ISO 4032	1.000	ST		
	44	5.100-451.0	Shaft	1.000	ST		
	45	5.317-113.0	Bolt	1.000	ST		



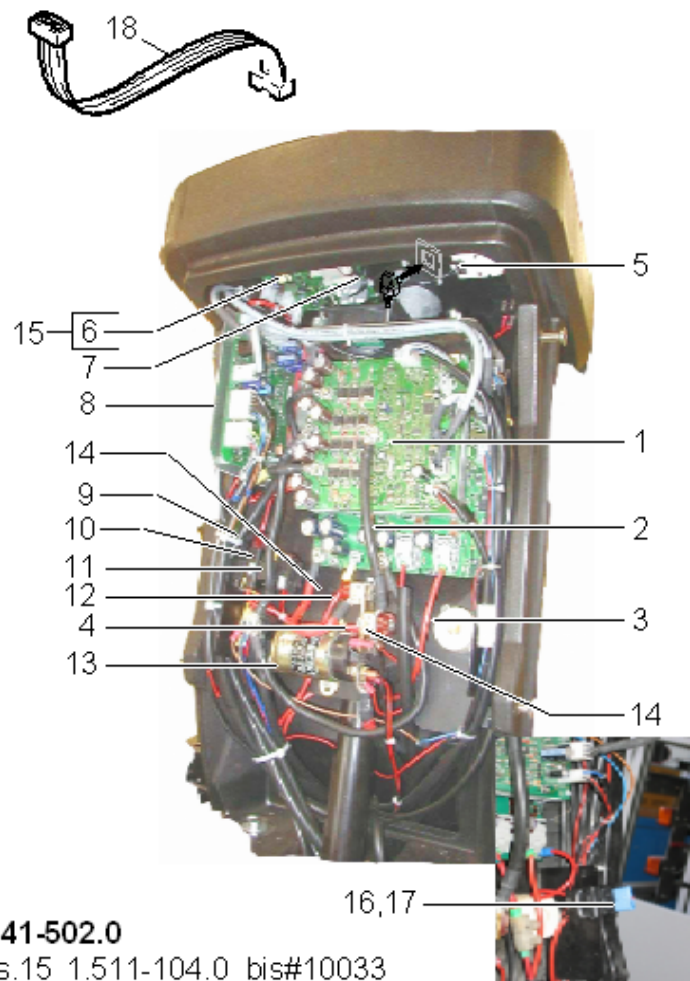
100 Tank hydraulic (0.209-754.0)

Pos	Material #	Name	Qty.	Unit	Footnote text
1	4.071-216.0	Tank hydraulic right RAL 7012	1.000	ST	GREY
2	4.071-217.0	Tank hydraulic left RAL 7012	1.000	ST	GREY



110 Hydraulic schematic (0.208-095.0)

ET/VT (spare/wear parts)	Pos	Material #	Name	Qty.	Unit	from ser.nr.	up to ser.nr.	var. information
	1	2.642-134.0	Conversion kit hydraulic pump	1.000	ST	0000000000	0000000000	Version 2
	2	6.391-395.0	Hydraulic hose lifting cylinder ob / StB	1.000	ST	0000000000	0000000000	
	3	6.391-396.0	Hydraulic hose KiZy ausk. / Stbl	1.000	ST	0000000000	0000000000	
	4	6.391-397.0	Hydraulic hose KiZy eink. / StBl	1.000	ST	0000000000	0000000000	
	5	6.391-398.0	Hydraulic hose KwZy re u / StBl	1.000	ST	0000000000	0000000000	
	6	6.391-399.0	Hydraulic hose KwZy li u / StBl	1.000	ST	0000000000	0000000000	
	7	6.391-400.0	Hydraulic hose KwZy li o / StBl	1.000	ST	0000000000	0000000000	
	8	6.391-401.0	Hydraulic hose KwZyl re o / StBl	1.000	ST	0000000000	0000000000	
	9	6.391-402.0	Hydraulic hose SBZy re / StBl	1.000	ST	0000000000	0000000000	
	10	6.391-403.0	Hydraulic hose HubZy u / StBl	1.000	ST	0000000000	0000000000	
X-X	11	6.386-667.0	Screw connector	4.000	ST	0000000000	0000000000	
	12	6.386-529.0	Screw union G1/8A	5.000	ST	0000000000	0000000000	
X	13	6.386-636.0	Screw connector	2.000	ST	0000000000	0000000000	
	14	5.665-023.0	Throttle 0,8mm	2.000	ST	0000000000	0000000000	
	15	5.665-022.0	Throttle throttle pedal	1.000	ST	0000000000	0000000000	
X	16	6.386-644.0	Screw connector XSWVE8LR1/4	1.000	ST	0000000000	0000000000	
	17	6.503-032.0	Traction motor hydraulic pump	1.000	ST			Version 1
	18	6.503-033.0	Hydraulic pump with control block	1.000	ST			
	19	5.062-200.0	Holder hydraulic pump	1.000	ST			
X-X	20	7.312-005.0	Washer 10-200HV-A3E ISO 7090	2.000	ST			
	21	7.304-410.0	Hexagonal head screw M10x16-8.8-A3E ISO	2.000	ST			
X-X	22	6.644-277.0	Fuse insert -60A	1.000	ST			



2.641-502.0

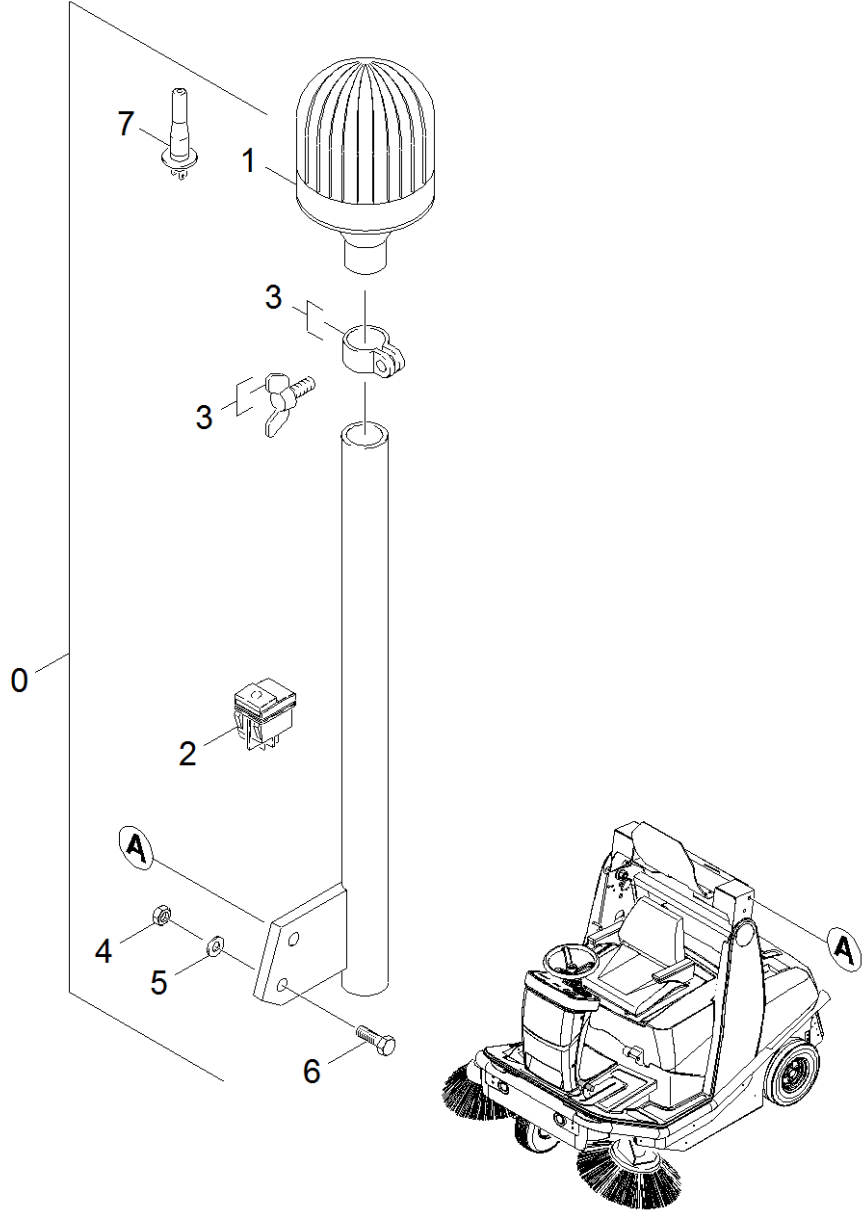
Pos.15 1.511-104.0 bis#10033
1.511-105.0 bis#10054
1.511-205.0 bis#10001

2.641-503.0

Pos.15 1.511-104.0 ab#10034
1.511-105.0 ab#10055
1.511-204.0 ab#10000
1.511-205.0 ab#10002

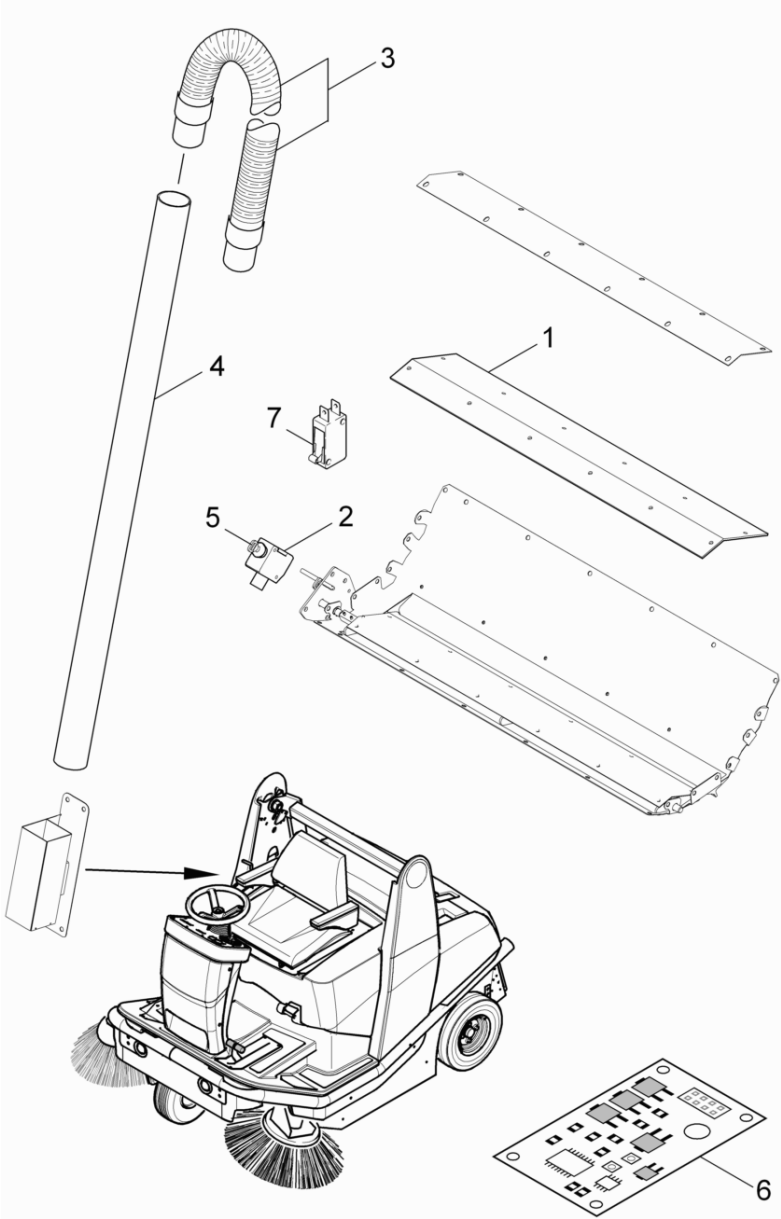
120 Electric installation (0.208-096.0)

ET/VT (spare/wear parts)	Pos	Material #	Name	Qty.	Unit	from ser.nr.	up to ser.nr.	var. information
X-X	1	6.682-794.0	Control circuit board drive module indus	1.000	ST	0000000000	0000000000	
X-X	2	6.683-174.0	Control circuit board Cleanmodul	1.000	ST	0000000000	0000000000	
X-X	3	6.630-158.0	Buzzer	1.000	ST	0000000000	0000000000	
X-X	4	6.644-333.0	Fuse 150A	1.000	ST	0000000000	0000000000	
X-X	5	2.630-001.0	Switch program selection	1.000	ST	0000000000	0000000000	
	6	6.682-890.0	Head CPU Modul	1.000	ST			1. Generation
Position text: VERSION 2								
	6	6.682-889.0	Circuit board head info panel	1.000	ST	0000000000	0000000000	2. Generation
Position text: Version 1								
	7	6.682-750.0	Circuit board info panel BR/BD 100-250 R	1.000	ST	0000000000	0000000000	
Position text: VERSION 1								
X	8	6.682-748.0	Control circuit board accessory module	1.000	ST	0000000000	0000000000	
X-X	9	6.644-272.0	Blade type fuse MEGA 50A	1.000	ST	0000000000	0000000000	
X	10	6.644-275.0	Fuse holder	1.000	ST	0000000000	0000000000	
X-X	11	6.644-279.0	Fuse holder	1.000	ST	0000000000	0000000000	
X-X	12	6.644-363.0	Fuse replacement 100A	1.000	ST	0000000000	0000000000	
X-X	13	6.632-394.0	Contactactor 24V / 180A	1.000	ST	0000000000	0000000000	
	14	6.652-022.0	Isolator	2.000	ST			
	15	2.641-502.0	Conversion kit head CPU 1-Generation KM	1.000	ST			
	15	2.641-503.0	Conversion kit head CPU 2-Generation KM	1.000	ST			
	16	4.822-521.0	Cable overload protection	1.000	ST			
	17	6.644-367.0	Safety cutout motorcar 15 A	1.000	ST			
X-X	18	6.642-120.0	Data cable only for replacement (Buskab	1.000	ST			



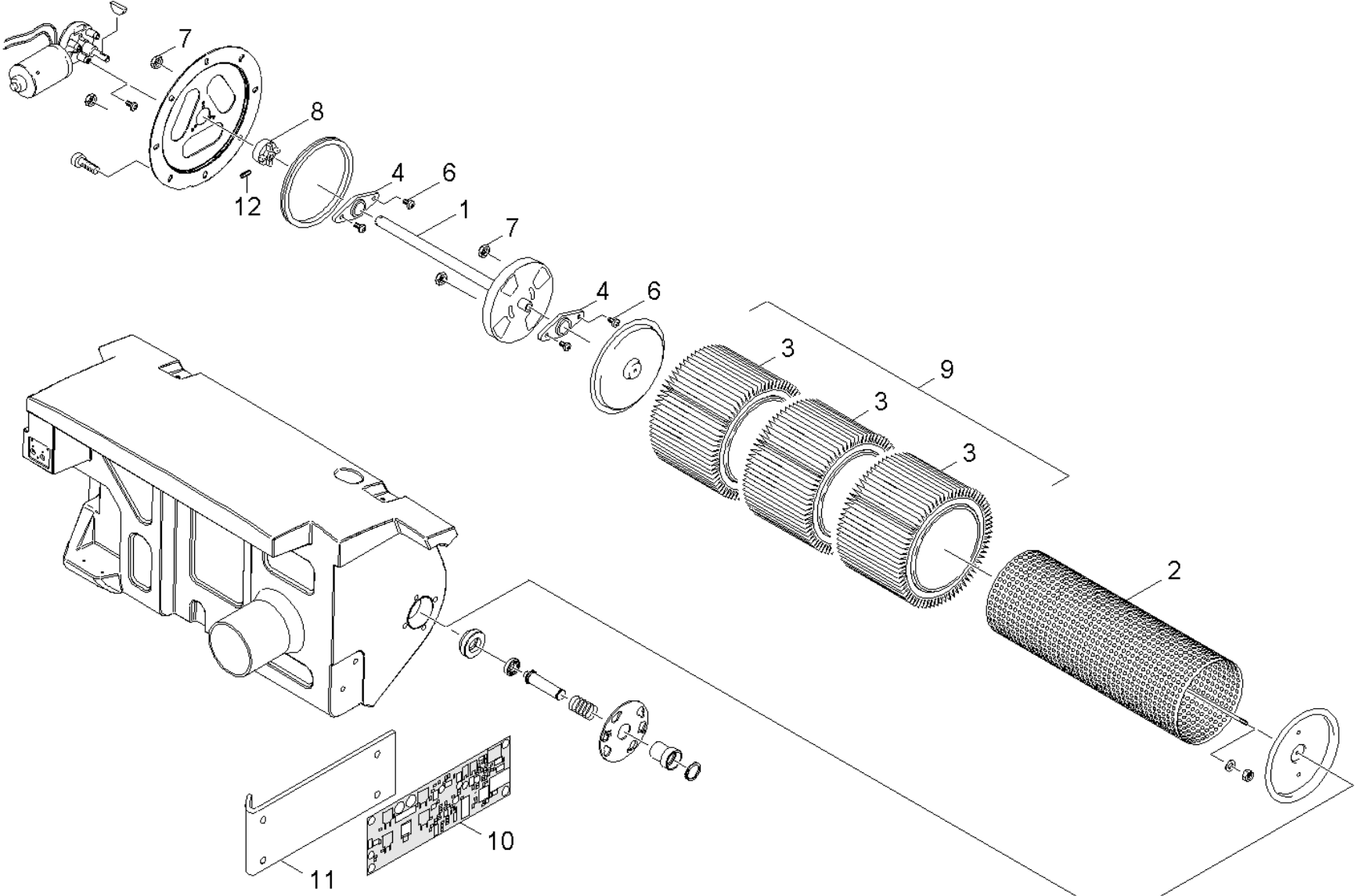
130 Add-on kit revolving signal light (0.208-139.0)

ET/VT (spare/wear parts)	Pos	Material #	Name	Qty.	Unit	from ser.nr.	up to ser.nr.	var. information
	0	2.641-078.7	Add-on kit revolving signal light batter	1.000	ST	0000000000	0000000000	
Position text: 1.511-101/-102/-103								
	1	6.651-566.0	Lamp	1.000	ST	0000000000	0000000000	Benzin/D/LPG
X	1	6.651-426.0	Revolving signal light 12/24V	1.000	ST			BAT
	2	6.632-369.0	Switch two-pole revolving signal light	1.000	ST	0000000000	0000000000	
	3	6.651-387.0	Socket pipe	1.000	ST	0000000000	0000000000	
X	4	7.311-004.0	Hexagon nut M8 -8-A3E ISO 4032	2.000	ST	0000000000	0000000000	
X-X	5	7.312-004.0	Washer 8 -200HV-A3E ISO 7090	2.000	ST	0000000000	0000000000	
X-X	6	7.304-399.0	Hexagonal head screw M 8x25-8.8-A2E ISO	2.000	ST	0000000000	0000000000	
X	7	6.651-295.0	Halogen lamp 24V70W	1.000	ST			BAT
X	7	6.651-284.0	Halogen lamp 12V55W	1.000	ST			Benzin/D/LPG



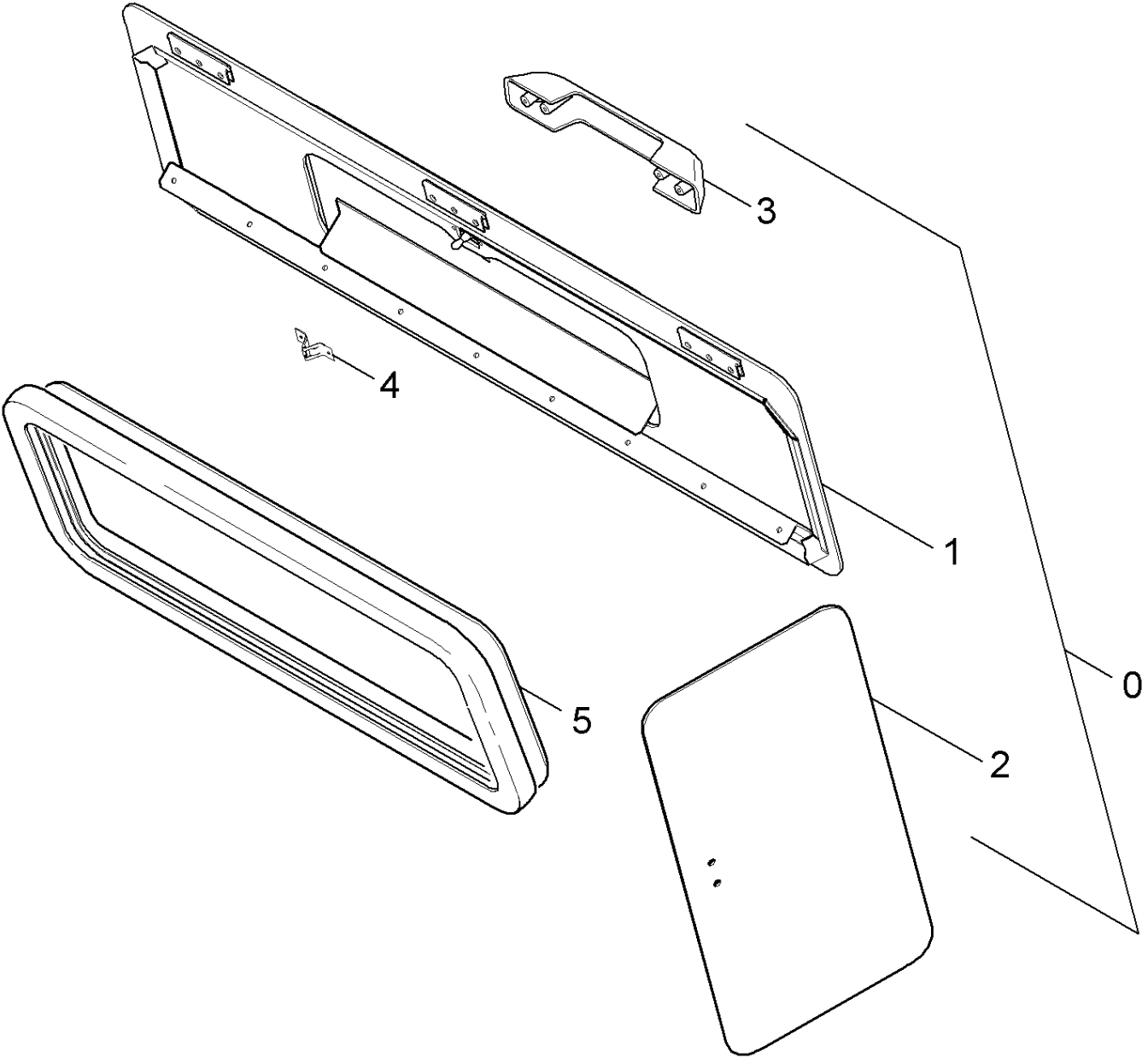
140 Add-on kit suction hose (0.208-140.0)

Pos	Material #	Name	Qty.	Unit	from ser.nr.	up to ser.nr.
0	2.641-074.7	Add-on kit suction hose only from factor	1.000	ST	0000000000	0000000000
1	5.365-265.0	Rubber lip suction hose hand	1.000	ST	0000000000	0000000000
2	6.632-392.0	Hoisting motor 24 V	1.000	ST	0000000000	0000000000
Position text: 1.511-101/-102/-103						
3	6.391-430.0	Hose	1.000	ST	0000000000	0000000000
4	5.129-030.0	Tube suction hose 50	1.000	ST	0000000000	0000000000
5	6.632-393.0	Trailer coupling ring	1.000	ST	0000000000	0000000000
6	6.682-799.0	Circuit board hand suction hose	1.000	ST		
7	6.631-788.0	Toggle switch	1.000	ST		



150 Add-on kit filter (0.208-141.0)

ET/VT (spare/wear parts)	Pos	Material #	Name	Qty.	Unit	from ser.nr.	up to ser.nr.
	1	4.510-053.0	Axle complete	1.000	ST	0000000000	0000000000
	2	4.011-023.0	Jacket complete filter	1.000	ST	0000000000	0000000000
X-X	3	6.414-526.0	Filter element Polyester	3.000	ST	0000000000	0000000000
	4	6.403-052.0	Plain bearing 25	2.000	ST	0000000000	0000000000
X-X	5	7.314-376.0	Straight pin 4x12-A-St ISO 8734	1.000	ST	0000000000	0000000000
X	6	7.306-443.0	Cylinder head screw M5x12-4.8-A2E ISO 1	4.000	ST	0000000000	0000000000
	7	7.311-029.0	Hexagon nut M 5-A4-70 ISO 7042	4.000	ST	0000000000	0000000000
	8	5.474-037.0	Carrier	1.000	ST	0000000000	0000000000
X-X	9	6.414-554.0	Filter element 3St.	1.000	ST	0000000000	0000000000
	10	6.682-798.0	Circuit board module filter cleaning	1.000	ST		
	11	5.094-359.0	Sheet metal component holder circuit boa	1.000	ST		
X-X	12	7.307-006.0	Threaded pin M3x8 -A2-21H ISO 4028	1.000	ST		
	100	7.777-999.0	Stockpiling discontinued	1.000	ST		



160 Add-on kit flap (0.208-134.0)

ET/VT (spare/wear parts)	Pos	Material #	Name	Qty.	Unit	from ser.nr.	up to ser.nr.	Footnote text
	0	2.640-909.0	Add-on kit hand flap sweep tank	1.000	ST	0000000000	0000000000	
	1	4.040-490.0	Sheet metal component complete	1.000	ST	0000000000	0000000000	
	2	4.040-442.0	Sheet metal component cover complete	1.000	ST	0000000000	0000000000	
	3	6.905-387.0	Handhold	1.000	ST	0000000000	0000000000	
X-X	4	6.330-149.0	Spring	1.000	ST	0000000000	0000000000	
X-X	5	6.365-375.0	Sealing profile	1.000	M	0000000000	0000000000	TO ORDER AS CUT GOODS